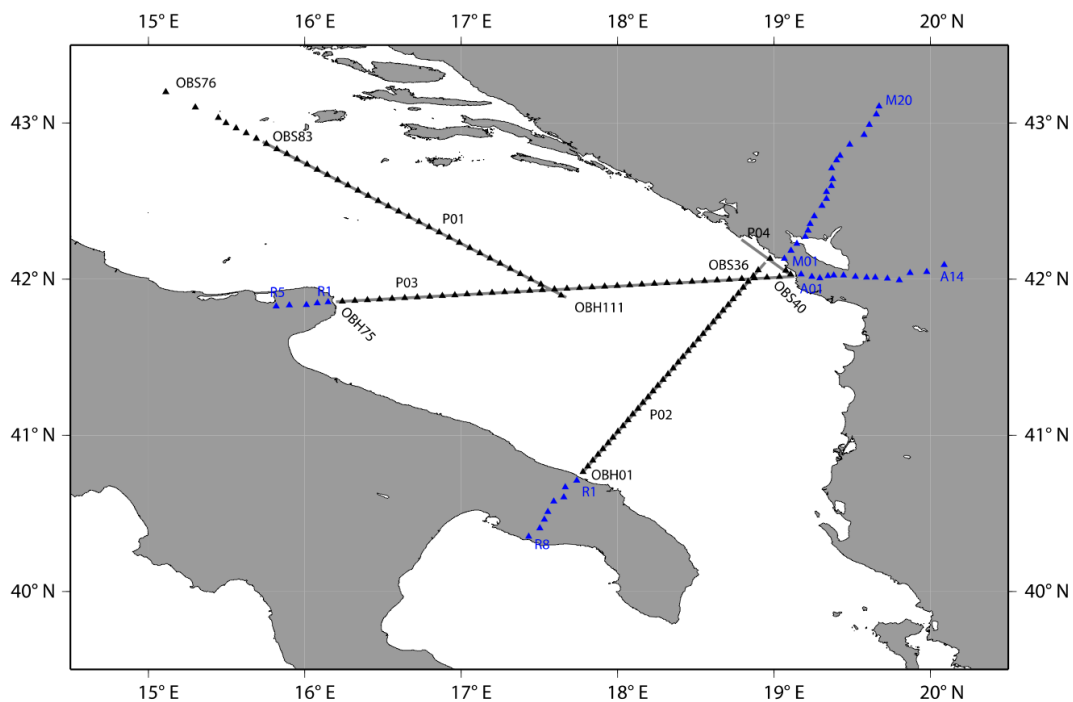


Heidrun Kopp
Helmholtz-Zentrum für Ozeanforschung Kiel
GEOMAR
Wischhofstr. 1-3
24148 Kiel

Tel: +49-431-600-2334
Fax: +49-431-600-2922
hkopp@geomar.de

Short Cruise Report RV METEOR Cruise M86/3

Brindisi – Dubrovnik
20. January – 04. February 2012
Chief Scientist: Heidrun Kopp
Captain: Stefan Schwarze



Profile and station locations M86/3.

Objectives

The eastern Adriatic margin, where the Adriatic plate is subducted beneath Eurasia to form the Dinaric mountain belt, is one of the most enigmatic segments of the Alpine-Mediterranean collision zone. This is due to an along-strike change in the nature of the plate boundary from a “Albanide-Hellenic” segment in the SE characterized by roll-back subduction of a NE-dipping lithospheric slab and back-arc spreading, to a “Dinaric” segment in the NW dominated by highly oblique (dextral) shortening, no discernible slab and intramontane strike-slip basins. Two of our seismic profiles (P1, P2) and bathymetric maps are situated near the junction of these segments offshore Montenegro. They are designed to help ascertain how the structure of the Adriatic lithosphere is related to these along-strike differences in collisional geometry and kinematics. The third profile (P3) is oriented NW-SE across a zone of enhanced seismicity that transects the Adriatic plate from the Gargano Peninsula (Italy) to Dubrovnik (Croatia) and is possibly related to ongoing fragmentation of the Adriatic lithosphere. The offshore coastal areas we have studied include numerous sites of instrumental and historical earthquakes with risk for the local population. This study therefore addresses the following first-order questions:

- What is the deep structure of the Adriatic plate? Do inherited Mesozoic and Cenozoic platforms and basins coincide with along-strike changes in the geometry and kinematics of the active plate boundary?
- How deep is the Moho beneath the Adriatic platform and does its topography vary along the plate boundary? Does its geometry in the study area reflect the northwestern termination of the deep-reaching Hellenic slab?
- What is the geometry of the deformation front along the Adria-Europe plate boundary? Does it change along strike and can such changes be related to onshore structures of the Dinarides?
- Can an active decoupling zone be imaged between the northern and southern parts of the Adriatic microplate in this area? Such a fault zone has been proposed in recent neotectonic studies based on the coincidence of local seismicity with measured changes in the convergence rate. Characterizing this potential is an important component of improving the assessment of seismic hazard in the region.

To shed light on these issues, we obtained seismic and hydro-acoustic images of the present-day architecture of the Adriatic crust, including the wedge of continental material that is accreted to the upper European Plate along the offshore front of the Dinaric orogen. This involved the acquisition of refraction seismic data with ocean-bottom hydrophones (OBH) and ocean-bottom seismometers (OBS) along two transects (P1, P2) that extended from Apulia (Brindisi) and the Gargano Peninsula to their meeting point near the Montenegro-Albania border, where they continued onshore with seismometers deployed along

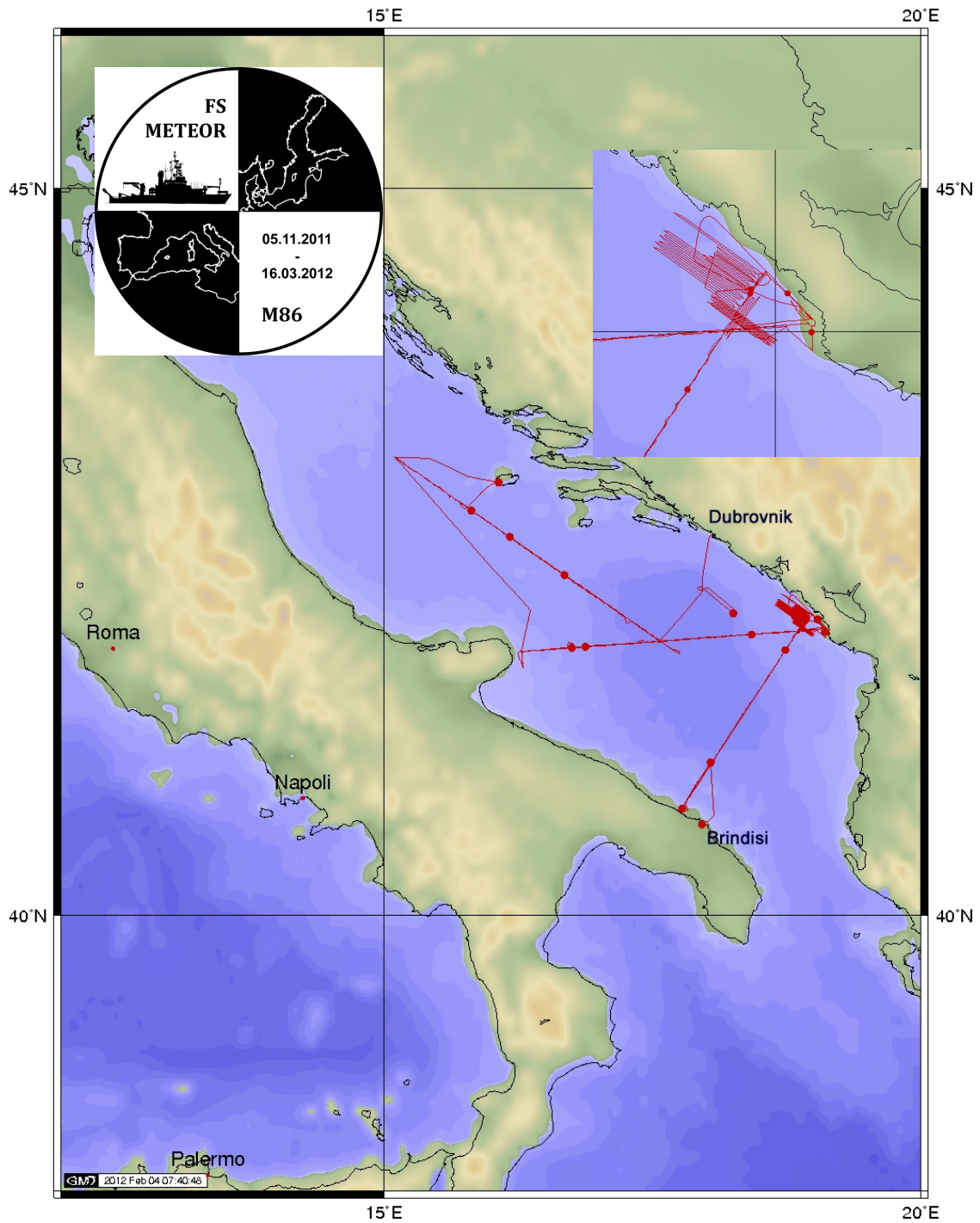
a transect from the coast of Montenegro into the mountains of northern Albania. This amphibious approach provided new coverage of the transition between the Adriatic basin and the Dinaric fold-and-thrust belt. Post-cruise work is foreseen to integrate seismological data from the existing national onshore networks, as well as existing geological data on the neotectonics of the External Dinarides.

Narrative

The cruise M86/3 started on January 20, 2012 in Brindisi, Italy. An international group of scientists from Croatia, Italy, Switzerland, Austria and Germany embarked on FS Meteor at 09:00 20.01.12. After a short transit of two hours we began our studies with the deployment of a sound-velocity profiler. The station was also used to test our release units. Thereafter, we began deploying 36 Ocean Bottom Seismometers and Hydrophones (OBS/OBH) along profile P02 at an average spacing of 2.7 nm; all 36 instruments (OBH01 to OBS36) were deployed within 18 hours. Subsequently, an airgun array consisting of 6 G-gun clusters with a total volume of 80 l was fired across the 98 nm long spread of seismometers with a trigger interval of 60 s at the ship's average speed of 4.0 kn, resulting in a shot spacing of 100 m. In addition, an 8-channel streamer was deployed. Prior to shooting, communication with our partners onshore in Italy and Montenegro verified that all onshore stations were ready for recording. Shooting terminated at 13:00 on 23.01.12 and subsequently instruments were recovered. The cruise track is displayed in Figure 3.10. The last station (OBS36) along track remained on the seafloor and an additional OBS (OBS37) was deployed between the end of the profile and the shore of Montenegro, approximately 1.5 nm from the coast.

Due to adverse weather conditions with gales up to 12 Bft in the central Adria, R/V Meteor remained close to the Montenegro shore where wind and wave conditions were calm. We commenced the seafloor mapping survey in the source region of the 1979 Montenegro Mw 7.1 earthquake at 17:00 24.01.12 and continued the swath mapping until the next morning. At 05:30 25.01.12 we deployed two additional OBS (OBS38 and OBS39) off the coast of Montenegro and subsequently used all airgun clusters to shoot a 20 nm long coast-parallel profile at a speed of 4.5 kn. The four instruments on the seafloor during shooting (OBS36 to OBS39) were deployed to minimize the gap between the offshore stations along P02 and the onshore seismometers deployed in extension of our track in Montenegro, which were installed to record the offshore airgun shots. The coast parallel profile P04 was geared to provide a fan shooting geometry for the onshore seismometers and to yield across-strike information for P02. Shooting of P04 terminated at 15:30 25.01.12 and the four remaining OBS stations were successfully recovered. We continued the swath mapping activities at 17:30 25.01.12 until the next morning, when instrument deployment at an average spacing of 3.6 nm along P03 commenced. All 36 instruments (OBS40 to OBH75) were deployed starting at 09:00 26.01.12 offshore Albania and heading back towards Italy, where the profile terminates after 130 nm offshore Gargano Peninsula. After deployment of the last station at 03:00 27.01.12

we confirmed that the onshore stations were set up for recording. Profile P03 is extended onshore on the Gargano promontory and into northern Albania, where land



FS METEOR CRUISE M86-3

Brindisi - Dubrovnik 20.01.2012 - 03.02.2012



Mercator Projection
Distance: 2034 nm
Made by AG / Fielax



Cruise track M86/3.

stations have been installed along strike of the offshore profile to record the airgun shots. Shooting started at 09:00 27.01.12 as we headed back towards the Montenegro-Albania coast. The streamer was deployed on the profile. Shooting was conducted at an interval of 60 s at a speed of 4.5 kn on average and terminated at 12:30 28.01.12 near the coast of Albania. As the last station was deployed in water depth of less than 60 m, we recovered the station using Meteor's speedboat. OBS 68 responded to our transducer signal, however, could not be spotted on location. After ~2.5 hrs of search, the instrument could be retrieved; it had already released on Jan. 27, approx. 20:00. This was not due to erroneous programming of the time release, but must rather be attributed to a malfunction of the release unit. All other stations were recovered successfully by 20:30 29.01.12 so that we could start our transit to the northern termination of Profile P01. P01 is a NW-SE trending seismic profile with a total extension of 165 nm and an instrument spacing of 3.6 nm. Deployment of OBS76 – OBH111 started at 05:00 30.01.12 and was terminated after 19 hours. Airgun deployment at 01:30 31.01.12 was conducted with wave heights reaching 2 m and proved difficult on the portside, where the use of a crane is not possible because R/V Meteor's deck crane does not reach far enough. The streamer was deployed in addition. The wind and wave conditions improved during the early morning hours of 31.01.12, but wind and waves increased during the night. Winds gusts of up to 90 kn are expected in our working area on 01.02.12. We were thus forced to recover the airguns and streamer at 22:30 31.01.12 after having shot over OBS82. We subsequently sailed to the Island of Vis and anchored in the Bay of Komiza to wait for improving weather conditions. We departed from here at 02:00 02.02.12 to start our transit back to P01 for instrument recovery. All instruments were recovered between 06:00 02.02.12 and 08:00 03.02.12 and all had recorded successfully.

The weather forecast predicted winds of >60 kn for our transit to Dubrovnik. We were thus forced to cancel the initially planned additional bathymetric survey for 03.02.12 and sail directly to port, arriving 14 hours ahead of schedule. In the evening of 03.02.12 at 18:00 the pilot entered the R/V Meteor, and soon after R/V Meteor birthed in Dubrovnik, terminating cruise M86/3.

Acknowledgements

We like to thank Captain Stefan Schwarze, his officers and crew of RV Meteor for their support of our measurement programme and for creating a very friendly atmosphere on board.

The ship time of R/V METEOR was provided by the Deutsche Forschungsgemeinschaft DFG. We gratefully acknowledge the support.

Participants

Name		Institution
Prof. Dr. Heidrun Kopp	Chief Scientist	GEOMAR
Prof. Dr. Andrea Argnani	Seismics, Bathymetry	ISMAR-CNR
Dr. Anke Dannowski	Seismics	GEOMAR
Iva Dasović	Seismics	Univ. Zagreb
Ines Dumke	Seismics	GEOMAR
Judith Elger	Seismics	TU Berlin
Prof. Dr. Ernst R. Flueh	Seismics	GEOMAR
Bernd Frey	Meteorology	DWD
Prof. Dr. Mark R. Handy	Tectonics	FU Berlin
Jens Karstens	Seismics	GEOMAR
Martin Kordowski	IT	GEOMAR
Dr. Anne Krabbenhoeft	Seismics, Bathymetry	GEOMAR
Dr. Cord Papenberg	Seismics	GEOMAR
Dr. Lars Planert	Seismics	GEOMAR
Klaus-Peter Steffen	Seismics	GEOMAR
Josip Stipčević	Seismics	Univ. Zagreb
Dr. Kamil Ustaszewski	Tectonics	GFZ
Dr. Wilhelm Weinrebe	Bathymetry	GEOMAR
Thorge Wiskandt	Seismics	GEOMAR
Timo Zander	Seismics	CAU

Christian-Albrechts Universität zu Kiel

Christian-Albrechts-Platz 4
24118 Kiel, Germany

DWD

Deutscher Wetterdienst
Bernhard-Nocht-Straße 76
20359 Hamburg, Germany

Freie Universität Berlin

Malteserstr. 74-100
12249 Berlin, Germany

GEOMAR

Helmholtz-Zentrum für Ozeanforschung
Kiel
Wischhofstr. 1-3
24148 Kiel, Germany

GFZ

Helmholtz-Zentrum Potsdam
Deutsches Geoforschungszentrum
Telegrafenberg
14473 Potsdam, Germany

ISMAR-CNR

Institute of Marine Sciences - National
Research Council
Via Gobetti 101
40129 Bologna, Italy

Technische Universität Berlin

Straße des 17. Juni 135
10623 Berlin, Germany

University of Zagreb

Horvatovac bb
10000 Zagreb, Croatia

Station	Date	Time	PositionLat	PositionLon	Depth [m]	Windstrength	Course [°]	Speed [kn]	Gear	Gear Abbrevia
ME863/034-1	20.01.12	11:05	41° 5,13' N	18° 2,54' E		0 S 8		0	0,4	Releaser Test REL
ME863/034-1	20.01.12	11:31	41° 5,12' N	18° 2,54' E		0 SSW 9		0	0	Releaser Test REL
ME863/034-1	20.01.12	12:12	41° 5,12' N	18° 2,54' E		0 SSW 8		0	0	Releaser Test REL
ME863/034-1	20.01.12	12:34	41° 5,12' N	18° 2,54' E		0 S 11		75,5	0,1	Releaser Test REL
ME863/034-1	20.01.12	12:41	41° 5,12' N	18° 2,54' E		0 S 10		31,9	0	Releaser Test REL
ME863/035-1	20.01.12	14:51	40° 48,15' N	17° 48,66' E	90,9	S 5		34,4	-0,5	Ocean bottom OBH
ME863/035-1	20.01.12	14:51	40° 48,15' N	17° 48,66' E	90,9	S 5		34,4	-0,5	Ocean bottom OBH
ME863/036-1	20.01.12	15:24	40° 50,34' N	17° 50,56' E	101,5	S 8		35,8	-0,4	Ocean bottom OBH
ME863/036-1	20.01.12	15:24	40° 50,34' N	17° 50,56' E	101,5	S 8		35,8	-0,4	Ocean bottom OBH
ME863/037-1	20.01.12	15:54	40° 52,57' N	17° 52,51' E	105,8	S 9		0	-0,1	Ocean bottom OBH
ME863/037-1	20.01.12	15:54	40° 52,57' N	17° 52,51' E	105,8	S 9		0	-0,1	Ocean bottom OBH
ME863/038-1	20.01.12	16:17	40° 54,76' N	17° 54,46' E	113,4	S 9		307,6	0,3	Ocean bottom OBH
ME863/038-1	20.01.12	16:17	40° 54,76' N	17° 54,46' E	113,4	S 9		307,6	0,3	Ocean bottom OBH
ME863/039-1	20.01.12	16:46	40° 56,98' N	17° 56,32' E	127,8	S 9		200,7	0,3	Ocean bottom OBH
ME863/039-1	20.01.12	16:46	40° 56,98' N	17° 56,32' E	127,8	S 9		200,7	0,3	Ocean bottom OBH
ME863/040-1	20.01.12	17:11	40° 59,21' N	17° 58,28' E	176,4	SSW 9		34,4	0,2	Ocean bottom OBH
ME863/040-1	20.01.12	17:11	40° 59,21' N	17° 58,28' E	176,4	SSW 9		34,4	0,2	Ocean bottom OBH
ME863/041-1	20.01.12	17:39	41° 1,41' N	18° 0,20' E	667,8	SSW 11		38,3	-0,2	Ocean bottom OBH
ME863/041-1	20.01.12	17:39	41° 1,41' N	18° 0,20' E	667,8	SSW 11		38,3	-0,2	Ocean bottom OBH
ME863/042-1	20.01.12	18:03	41° 3,64' N	18° 2,13' E	867,1	SSW 10		164,8	0,3	Ocean bottom OBH
ME863/042-1	20.01.12	18:03	41° 3,64' N	18° 2,13' E	867,1	SSW 10		164,8	0,3	Ocean bottom OBH
ME863/043-1	20.01.12	18:27	41° 5,85' N	18° 4,07' E	972,9	SSW 9		118,9	-0,2	Ocean bottom OBH
ME863/043-1	20.01.12	18:27	41° 5,85' N	18° 4,07' E	972,9	SSW 9		118,9	-0,2	Ocean bottom OBH
ME863/044-1	20.01.12	18:53	41° 8,08' N	18° 5,98' E	1030,5	SSW 10		25,1	-0,3	Ocean bottom OBH
ME863/044-1	20.01.12	18:53	41° 8,08' N	18° 5,98' E	1030,5	SSW 10		25,1	-0,3	Ocean bottom OBH
ME863/045-1	20.01.12	19:20	41° 10,31' N	18° 7,91' E	1058,4	SSW 11		337,3	-0,1	Ocean bottom OBH
ME863/045-1	20.01.12	19:21	41° 10,32' N	18° 7,91' E	1058,9	SSW 11		30,3	-0,2	Ocean bottom OBH
ME863/046-1	20.01.12	19:46	41° 12,54' N	18° 9,81' E	1073,5	SW 11		303,9	-0,2	Ocean bottom OBH
ME863/046-1	20.01.12	19:47	41° 12,55' N	18° 9,82' E	1073,8	SW 10		30,9	-0,3	Ocean bottom OBH
ME863/047-1	20.01.12	20:12	41° 14,75' N	18° 11,72' E	1082,1	SW 11		244,3	1,2	Ocean bottom OBH
ME863/047-1	20.01.12	20:13	41° 14,75' N	18° 11,70' E	1083,5	SW 11		247,8	0,3	Ocean bottom OBH
ME863/048-1	20.01.12	20:43	41° 16,95' N	18° 13,65' E	1090,4	SW 11		217	-0,1	Ocean bottom OBH
ME863/048-1	20.01.12	20:44	41° 16,96' N	18° 13,65' E	1091,7	SW 11		57,8	-0,3	Ocean bottom OBH
ME863/049-1	20.01.12	21:10	41° 19,18' N	18° 15,59' E	1093,8	SW 12		342,5	0,1	Ocean bottom OBH
ME863/049-1	20.01.12	21:11	41° 19,18' N	18° 15,59' E	1093,1	SW 12		31	-0,3	Ocean bottom OBH
ME863/050-1	20.01.12	21:36	41° 21,37' N	18° 17,52' E		1106 WSW 14		326,4	0,3	Ocean bottom OBH

ME863/050-1	20.01.12	21:37 41° 21,38' N	18° 17,52' E	1106,7 WSW 13	39,2	-0,2 Ocean bottom OBH
ME863/051-1	20.01.12	22:01 41° 23,57' N	18° 19,46' E	1108,7 WSW 12	216,8	0,5 Ocean bottom OBH
ME863/051-1	20.01.12	22:02 41° 23,57' N	18° 19,45' E	1110 WSW 12	160,6	0,4 Ocean bottom OBH
ME863/052-1	20.01.12	22:29 41° 25,80' N	18° 21,43' E	1112,6 WSW 14	231,2	1,1 Ocean bottom OBH
ME863/052-1	20.01.12	22:30 41° 25,79' N	18° 21,42' E	1112,4 WSW 10	311,9	0,7 Ocean bottom OBH
ME863/053-1	20.01.12	23:00 41° 27,96' N	18° 23,29' E	1107,8 NNW 19	200,9	0,4 Ocean bottom OBH
ME863/053-1	20.01.12	23:00 41° 27,96' N	18° 23,29' E	1107,8 NNW 19	200,9	0,4 Ocean bottom OBH
ME863/054-1	20.01.12	23:30 41° 30,18' N	18° 25,17' E	1080,2 NNW 13	290,3	0,2 Ocean bottom OBH
ME863/054-1	20.01.12	23:30 41° 30,18' N	18° 25,17' E	1080,2 NNW 13	290,3	0,2 Ocean bottom OBH
ME863/055-1	20.01.12	23:52 41° 32,42' N	18° 27,13' E	1052,7 NW 10	24,9	1,1 Ocean bottom OBH
ME863/055-1	20.01.12	23:52 41° 32,42' N	18° 27,13' E	1052,7 NW 10	24,9	1,1 Ocean bottom OBH
ME863/056-1	21.01.12	00:13 41° 34,60' N	18° 29,08' E	1013,6 WNW 9	298,8	2,6 Ocean bottom OBH
ME863/056-1	21.01.12	00:13 41° 34,60' N	18° 29,08' E	1013,6 WNW 9	298,8	2,6 Ocean bottom OBH
ME863/057-1	21.01.12	00:20 41° 34,69' N	18° 29,09' E	1011,3 NW 10	146,9	-0,1 Releaser Test REL
ME863/057-1	21.01.12	00:43 41° 34,69' N	18° 29,09' E	1011,1 NW 12	145,6	-0,2 Releaser Test REL
ME863/057-1	21.01.12	00:59 41° 34,69' N	18° 29,09' E	1011,8 WNW 13	295,7	0 Releaser Test REL
ME863/057-1	21.01.12	01:21 41° 34,69' N	18° 29,09' E	1011 WNW 12	0	0,1 Releaser Test REL
ME863/058-1	21.01.12	01:44 41° 36,81' N	18° 31,02' E	945 NW 16	301,1	0,8 Ocean bottom OBH
ME863/058-1	21.01.12	01:44 41° 36,81' N	18° 31,02' E	945 NW 16	301,1	0,8 Ocean bottom OBH
ME863/059-1	21.01.12	02:08 41° 39,03' N	18° 32,85' E	1174,2 NW 15	280,1	1,2 Ocean bottom OBH
ME863/059-1	21.01.12	02:08 41° 39,03' N	18° 32,85' E	1174,2 NW 15	280,1	1,2 Ocean bottom OBH
ME863/060-1	21.01.12	02:36 41° 41,29' N	18° 34,88' E	758 NW 14	237,3	0,9 Ocean bottom OBS
ME863/060-1	21.01.12	02:36 41° 41,29' N	18° 34,88' E	758 NW 14	237,3	0,9 Ocean bottom OBS
ME863/061-1	21.01.12	03:07 41° 43,50' N	18° 36,82' E	337,1 NW 17	287,2	0,4 Ocean bottom OBS
ME863/061-1	21.01.12	03:07 41° 43,50' N	18° 36,82' E	337,1 NW 17	287,2	0,4 Ocean bottom OBS
ME863/062-1	21.01.12	03:33 41° 45,69' N	18° 38,63' E	213,4 NNW 18	176,6	0,1 Ocean bottom OBS
ME863/062-1	21.01.12	03:33 41° 45,69' N	18° 38,63' E	213,4 NNW 18	176,6	0,1 Ocean bottom OBS
ME863/063-1	21.01.12	03:58 41° 47,91' N	18° 40,55' E	143,9 NNW 18	230,6	-0,1 Ocean bottom OBS
ME863/063-1	21.01.12	03:58 41° 47,91' N	18° 40,55' E	143,9 NNW 18	230,6	-0,1 Ocean bottom OBS
ME863/064-1	21.01.12	04:24 41° 50,15' N	18° 42,46' E	242,6 NNE 12	245,5	0,1 Ocean bottom OBS
ME863/064-1	21.01.12	04:24 41° 50,15' N	18° 42,46' E	242,6 NNE 12	245,5	0,1 Ocean bottom OBS
ME863/065-1	21.01.12	04:48 41° 52,34' N	18° 44,45' E	105 NE 12	231,4	0,2 Ocean bottom OBS
ME863/065-1	21.01.12	04:48 41° 52,34' N	18° 44,45' E	105 NE 12	231,4	0,2 Ocean bottom OBS
ME863/066-1	21.01.12	05:50 41° 56,77' N	18° 48,25' E	98,1 NE 11	237,8	0,2 Ocean bottom OBS
ME863/066-1	21.01.12	05:50 41° 56,77' N	18° 48,25' E	98,1 NE 11	237,8	0,2 Ocean bottom OBS
ME863/067-1	21.01.12	06:17 41° 58,96' N	18° 50,20' E	86,3 NNE 13	348,7	0,5 Ocean bottom OBS
ME863/067-1	21.01.12	06:17 41° 58,96' N	18° 50,20' E	86,3 NNE 13	348,7	0,5 Ocean bottom OBS

ME863/068-1	21.01.12	06:38 42° 1,19' N	18° 52,12' E	72 NNE 10	71,6	1 Ocean bottom OBS
ME863/068-1	21.01.12	06:38 42° 1,19' N	18° 52,12' E	72 NNE 10	71,6	1 Ocean bottom OBS
ME863/069-1	21.01.12	07:00 42° 3,45' N	18° 54,05' E	4,8 N 12	245,9	0,7 Ocean bottom OBS
ME863/069-1	21.01.12	07:00 42° 3,45' N	18° 54,05' E	4,8 N 12	245,9	0,7 Ocean bottom OBS
ME863/070-1	21.01.12	07:47 42° 5,70' N	18° 55,93' E	66 NE 8	90	0,2 Ocean bottom OBS
ME863/070-1	21.01.12	07:48 42° 5,70' N	18° 55,93' E	65,8 NE 9	0	-0,1 Ocean bottom OBS
ME863/071-1	21.01.12	08:12 42° 7,79' N	18° 57,60' E	66 NNE 7	296,4	7,6 Multibeam-Pa MB-PS
ME863/071-1	21.01.12	11:07 42° 7,63' N	18° 57,32' E	68,2 NNE 8	125,3	9,8 Multibeam-Pa MB-PS
ME863/072-1	21.01.12	11:34 42° 5,63' N	18° 55,70' E	66,9 NE 7	126,5	0,2 Sound Velocit SVP
ME863/072-1	21.01.12	11:36 42° 5,62' N	18° 55,70' E	67,4 NNE 7	229,9	0 Sound Velocit SVP
ME863/072-1	21.01.12	11:39 42° 5,63' N	18° 55,70' E	66,9 NNE 8	0	0 Sound Velocit SVP
ME863/073-1	21.01.12	12:03 42° 5,63' N	18° 55,70' E	67,5 NE 8	0	0 Multibeam-Pa MB-PS
ME863/073-1	21.01.12	13:36 42° 13,74' N	18° 40,22' E	114 NNW 2	277,4	8,9 Multibeam-Pa MB-PS
ME863/073-1	21.01.12	15:09 42° 5,24' N	18° 55,17' E	70,1 N 4	309,6	7,8 Multibeam-Pa MB-PS
ME863/073-1	21.01.12	16:36 42° 13,00' N	18° 39,70' E	115,4 N 2	147,3	7 Multibeam-Pa MB-PS
ME863/073-1	21.01.12	18:04 42° 4,77' N	18° 54,90' E	68,8 NE 3	305,9	6,3 Multibeam-Pa MB-PS
ME863/073-1	21.01.12	19:30 42° 12,78' N	18° 39,52' E	115,9 N 2	296,9	9,8 Multibeam-Pa MB-PS
ME863/073-1	21.01.12	20:56 42° 4,59' N	18° 54,66' E	68,6 NE 3	125,4	9,9 Multibeam-Pa MB-PS
ME863/073-1	21.01.12	22:25 42° 12,32' N	18° 39,22' E	117,2 NNE 0	305,9	10 Multibeam-Pa MB-PS
ME863/073-1	21.01.12	23:52 42° 4,19' N	18° 54,24' E	65,8 S 3	124,2	10,1 Multibeam-Pa MB-PS
ME863/073-1	22.01.12	01:19 42° 11,87' N	18° 38,92' E	119,2 SSE 3	306,6	10,2 Multibeam-Pa MB-PS
ME863/073-1	22.01.12	02:47 42° 3,65' N	18° 53,93' E	71,7 SE 9	152,4	8,9 Multibeam-Pa MB-PS
ME863/073-1	22.01.12	04:19 42° 11,26' N	18° 38,23' E	118,2 SE 7	110,6	6 Multibeam-Pa MB-PS
ME863/073-1	22.01.12	05:49 42° 3,06' N	18° 53,04' E	71,5 ESE 9	312,7	8,5 Multibeam-Pa MB-PS
ME863/073-1	22.01.12	06:18 42° 5,80' N	18° 47,90' E	77,4 ESE 10	306	9,9 Multibeam-Pa MB-PS
ME863/074-1	22.01.12	07:20 42° 10,15' N	18° 49,62' E	80,5 ESE 9	120,9	2 Seismic refrac SEISREFR
ME863/074-1	22.01.12	07:51 42° 9,49' N	18° 50,90' E	81,2 ESE 6	123,6	2,9 Seismic refrac SEISREFR
ME863/074-1	22.01.12	08:06 42° 9,07' N	18° 51,74' E	78,8 ESE 8	124,4	3 Seismic refrac SEISREFR
ME863/074-1	22.01.12	08:46 42° 7,97' N	18° 53,87' E	76 ESE 8	123,8	2,8 Seismic refrac SEISREFR
ME863/074-1	22.01.12	08:49 42° 7,89' N	18° 54,04' E	75,1 SE 8	124,5	2,8 Seismic refrac SEISREFR
ME863/074-1	22.01.12	09:08 42° 7,35' N	18° 55,09' E	65,5 ESE 8	122,8	2,8 Seismic refrac SEISREFR
ME863/074-1	22.01.12	11:25 42° 6,78' N	18° 56,98' E	67,7 E 4	207,3	2,2 Seismic refrac SEISREFR
ME863/074-1	22.01.12	11:30 42° 6,61' N	18° 56,84' E	64,2 E 4	212	2,3 Seismic refrac SEISREFR
ME863/074-1	22.01.12	11:35 42° 6,42' N	18° 56,68' E	65,4 ENE 5	211,5	3 Seismic refrac SEISREFR
ME863/074-1	22.01.12	11:48 42° 5,79' N	18° 56,11' E	66,1 E 5	215,5	4 Seismic refrac SEISREFR
ME863/074-1	23.01.12	11:34 40° 47,01' N	17° 47,69' E	80,6 SE 5	216,5	3,9 Seismic refrac SEISREFR
ME863/074-1	23.01.12	11:36 40° 46,90' N	17° 47,59' E	79,4 ESE 5	205,8	3,9 Seismic refrac SEISREFR

ME863/074-1	23.01.12	11:40 40° 46,68' N	17° 47,40' E	77,2 SE 6	212,8	4 Seismic refrac SEISREFR
ME863/074-1	23.01.12	11:42 40° 46,57' N	17° 47,30' E	76 ESE 5	208,9	4,1 Seismic refrac SEISREFR
ME863/074-1	23.01.12	11:58 40° 45,64' N	17° 46,59' E	54,8 ESE 5	176,8	3,8 Seismic refrac SEISREFR
ME863/074-1	23.01.12	12:54 40° 44,73' N	17° 48,66' E	53,3 E 7	106,9	1,6 Seismic refrac SEISREFR
ME863/074-1	23.01.12	13:22 40° 44,46' N	17° 49,66' E	61,9 ESE 5	110,8	1,9 Seismic refrac SEISREFR
ME863/075-1	23.01.12	14:05 40° 48,25' N	17° 48,48' E	0 ESE 7	322,8	-0,5 Ocean bottom OBH
ME863/076-1	23.01.12	14:49 40° 50,34' N	17° 50,64' E	0 SE 9	167,4	1,2 Ocean bottom OBH
ME863/077-1	23.01.12	15:42 40° 52,63' N	17° 52,60' E	0 SE 9	309,3	-0,3 Ocean bottom OBH
ME863/078-1	23.01.12	16:17 40° 54,80' N	17° 54,53' E	0 SE 8	201,9	0,8 Ocean bottom OBH
ME863/079-1	23.01.12	16:53 40° 57,03' N	17° 56,35' E	0 SSE 8	137,5	1,2 Ocean bottom OBH
ME863/080-1	23.01.12	17:33 40° 59,24' N	17° 58,35' E	0 SSE 10	139,8	0,4 Ocean bottom OBH
ME863/081-1	23.01.12	18:23 41° 1,46' N	18° 0,38' E	0 SSE 10	146,1	0,5 Ocean bottom OBH
ME863/082-1	23.01.12	18:47 41° 3,91' N	18° 2,04' E	0 SSE 8	54,1	0,2 Ocean bottom OBH
ME863/082-1	23.01.12	19:33 41° 3,91' N	18° 2,45' E	0 S 6	104	0,8 Ocean bottom OBH
ME863/083-1	23.01.12	20:00 41° 5,99' N	18° 4,05' E	0 S 4	188,9	0,1 Ocean bottom OBH
ME863/083-1	23.01.12	20:36 41° 5,92' N	18° 4,31' E	0 S 3	141,9	1,3 Ocean bottom OBH
ME863/084-1	23.01.12	20:58 41° 8,37' N	18° 5,77' E	0 SSE 5	68,7	6,9 Ocean bottom OBH
ME863/084-1	23.01.12	21:23 41° 8,07' N	18° 6,18' E	0 SSE 8	103,9	1 Ocean bottom OBH
ME863/085-1	23.01.12	21:40 41° 10,07' N	18° 7,39' E	0 SSE 7	23,9	11,2 Ocean bottom OBH
ME863/085-1	23.01.12	22:09 41° 10,29' N	18° 8,12' E	0 SSE 6	135,6	1,2 Ocean bottom OBH
ME863/086-1	23.01.12	22:27 41° 12,03' N	18° 9,17' E	0 SSE 8	24,6	11,4 Ocean bottom OBH
ME863/086-1	23.01.12	22:53 41° 12,47' N	18° 9,90' E	0 S 7	131,1	0,9 Ocean bottom OBH
ME863/087-1	23.01.12	23:09 41° 14,22' N	18° 11,05' E	0 SSE 6	21,2	12,1 Ocean bottom OBH
ME863/087-1	23.01.12	23:51 41° 14,73' N	18° 11,56' E	0 S 8	267,6	0,4 Ocean bottom OBH
ME863/111-1	24.01.12	00:07 0° 0,00' N	0° 0,00' E	0 N 0	0	0 Multibeam-Pa MB-PS
ME863/088-1	24.01.12	00:08 41° 16,54' N	18° 12,88' E	0 SE 7	29,7	12,2 Ocean bottom OBH
ME863/088-1	24.01.12	00:57 41° 17,00' N	18° 13,55' E	0 SE 10	261,5	-0,2 Ocean bottom OBH
ME863/089-1	24.01.12	01:25 41° 19,29' N	18° 15,40' E	0 SE 9	309,2	-0,5 Ocean bottom OBH
ME863/089-1	24.01.12	01:52 41° 19,23' N	18° 15,51' E	0 SE 10	191,4	1,1 Ocean bottom OBH
ME863/090-1	24.01.12	02:09 41° 21,06' N	18° 16,78' E	0 SE 10	24,9	12 Ocean bottom OBH
ME863/090-1	24.01.12	02:41 41° 21,41' N	18° 17,43' E	0 SE 9	241,3	0,4 Ocean bottom OBH
ME863/091-1	24.01.12	03:09 41° 23,77' N	18° 19,24' E	0 SE 7	111,5	0,8 Ocean bottom OBH
ME863/091-1	24.01.12	03:36 41° 23,63' N	18° 19,40' E	0 SE 8	0	0,3 Ocean bottom OBH
ME863/092-1	24.01.12	03:49 41° 25,04' N	18° 20,24' E	0 SE 8	21,2	12,5 Ocean bottom OBH
ME863/092-1	24.01.12	04:13 41° 25,79' N	18° 21,43' E	0 SE 7	106,2	0,7 Ocean bottom OBH
ME863/093-1	24.01.12	04:27 41° 27,77' N	18° 22,46' E	0 SE 7	18,5	12,1 Ocean bottom OBH
ME863/093-1	24.01.12	04:57 41° 27,94' N	18° 23,35' E	0 SE 5	133,2	0,3 Ocean bottom OBH

ME863/094-1	24.01.12	05:11 41° 29,75' N	18° 24,23' E	0 SE 4	19	12,1 Ocean bottom OBH
ME863/094-1	24.01.12	05:38 41° 30,24' N	18° 25,21' E	0 S 4	163,2	1,1 Ocean bottom OBH
ME863/095-1	24.01.12	05:53 41° 31,83' N	18° 26,46' E	0 SSW 4	24,6	12,6 Ocean bottom OBH
ME863/095-1	24.01.12	06:10 41° 32,60' N	18° 27,24' E	0 SW 4	251,6	-0,1 Ocean bottom OBH
ME863/096-1	24.01.12	06:29 41° 33,92' N	18° 28,37' E	0 WSW 3	34,4	12,9 Ocean bottom OBH
ME863/096-1	24.01.12	07:03 41° 34,80' N	18° 28,93' E	0 W 5	304,4	0,7 Ocean bottom OBH
ME863/097-1	24.01.12	07:20 41° 36,05' N	18° 30,49' E	0 WNW 5	46,6	10,4 Ocean bottom OBH
ME863/097-1	24.01.12	07:42 41° 36,97' N	18° 30,98' E	0 W 5	338,7	1,2 Ocean bottom OBH
ME863/098-1	24.01.12	07:58 41° 38,38' N	18° 32,61' E	0 W 3	45	10,7 Ocean bottom OBH
ME863/098-1	24.01.12	07:59 41° 38,51' N	18° 32,78' E	0 WNW 3	41,3	10,6 Ocean bottom OBH
ME863/099-1	24.01.12	08:46 41° 40,51' N	18° 34,28' E	0 WNW 6	40	12,4 Ocean bottom OBS
ME863/099-1	24.01.12	09:06 41° 41,33' N	18° 34,83' E	0 W 6	321,2	0,7 Ocean bottom OBS
ME863/100-1	24.01.12	09:24 41° 43,01' N	18° 36,60' E	0 W 4	45,3	12,4 Ocean bottom OBS
ME863/100-1	24.01.12	09:42 41° 43,58' N	18° 36,70' E	0 W 5	289,8	1,1 Ocean bottom OBS
ME863/101-1	24.01.12	09:59 41° 45,30' N	18° 38,65' E	0 W 4	44,9	12,1 Ocean bottom OBS
ME863/101-1	24.01.12	10:03 41° 45,82' N	18° 39,07' E	0 WNW 3	311,9	4,6 Ocean bottom OBS
ME863/102-1	24.01.12	10:50 41° 47,84' N	18° 40,75' E	0 W 3	306,6	2,7 Ocean bottom OBS
ME863/102-1	24.01.12	11:03 41° 48,02' N	18° 40,40' E	0 WNW 3	295,1	1 Ocean bottom OBS
ME863/103-1	24.01.12	11:23 41° 49,92' N	18° 42,85' E	0 ENE 1	359,1	8,1 Ocean bottom OBS
ME863/103-1	24.01.12	11:33 41° 50,18' N	18° 42,34' E	0 WNW 1	304,2	0,7 Ocean bottom OBS
ME863/104-1	24.01.12	11:54 41° 52,17' N	18° 44,77' E	0 ENE 1	335,6	6,4 Ocean bottom OBS
ME863/104-1	24.01.12	12:06 41° 52,43' N	18° 44,36' E	0 NNW 1	335,2	0,8 Ocean bottom OBS
ME863/105-1	24.01.12	12:26 41° 54,43' N	18° 46,60' E	0 NNW 0	319,6	5,1 Ocean bottom OBS
ME863/105-1	24.01.12	12:34 41° 54,64' N	18° 46,27' E	0 W 1	326,4	1,1 Ocean bottom OBS
ME863/106-1	24.01.12	12:54 41° 56,63' N	18° 48,57' E	0 SE 1	324,8	6,2 Ocean bottom OBS
ME863/106-1	24.01.12	13:04 41° 56,85' N	18° 48,13' E	0 S 1	321,9	1,2 Ocean bottom OBS
ME863/107-1	24.01.12	13:26 41° 59,15' N	18° 49,91' E	0 SE 3	129,8	3,5 Ocean bottom OBS
ME863/107-1	24.01.12	13:35 41° 58,97' N	18° 50,22' E	0 SE 3	119,6	0,6 Ocean bottom OBS
ME863/108-1	24.01.12	13:54 42° 1,47' N	18° 51,85' E	0 SE 3	93,5	5,7 Ocean bottom OBS
ME863/108-1	24.01.12	14:02 42° 1,22' N	18° 52,09' E	0 SE 4	185,8	1,1 Ocean bottom OBS
ME863/109-1	24.01.12	14:24 42° 3,75' N	18° 53,78' E	0 SSE 3	91,7	5,4 Ocean bottom OBS
ME863/109-1	24.01.12	14:35 42° 3,43' N	18° 54,07' E	0 SSE 4	147,8	0,9 Ocean bottom OBS
ME863/110-1	24.01.12	15:16 42° 7,95' N	18° 58,54' E	54,4 SE 4	52,1	0,1 Ocean bottom OBS
ME863/110-1	24.01.12	15:16 42° 7,95' N	18° 58,54' E	54,4 SE 4	52,1	0,1 Ocean bottom OBS
ME863/111-1	24.01.12	15:47 42° 7,37' N	18° 57,18' E	67,1 ESE 5	303,8	8,7 Multibeam-Pa MB-PS
ME863/111-1	24.01.12	16:34 42° 11,25' N	18° 49,28' E	81 WSW 8	131,2	7,6 Multibeam-Pa MB-PS
ME863/111-1	24.01.12	17:20 42° 7,03' N	18° 56,74' E	66,5 WSW 10	305,6	7,6 Multibeam-Pa MB-PS

ME863/111-1	24.01.12	18:05 42° 10,82' N	18° 49,01' E	82,8 SW 1	126,3	7,6 Multibeam-Pa MB-PS
ME863/111-1	24.01.12	18:50 42° 6,64' N	18° 56,48' E	64,2 E 4	286,9	7,5 Multibeam-Pa MB-PS
ME863/111-1	24.01.12	19:32 42° 10,67' N	18° 48,91' E	82,8 E 7	304,9	9,8 Multibeam-Pa MB-PS
ME863/111-1	24.01.12	20:21 42° 6,42' N	18° 56,36' E	69 NE 7	153	8,4 Multibeam-Pa MB-PS
ME863/111-1	24.01.12	21:06 42° 10,25' N	18° 48,52' E	84,3 E 8	305,3	10 Multibeam-Pa MB-PS
ME863/111-1	24.01.12	21:56 42° 5,95' N	18° 56,01' E	67,5 NNE 7	207,8	7,1 Multibeam-Pa MB-PS
ME863/111-1	24.01.12	22:54 42° 9,88' N	18° 47,19' E	95,1 E 15	122,1	4,9 Multibeam-Pa MB-PS
ME863/111-1	24.01.12	23:47 42° 5,20' N	18° 56,16' E	65,6 ENE 12	179,8	8,4 Multibeam-Pa MB-PS
ME863/111-1	25.01.12	00:27 41° 59,72' N	18° 51,16' E	81,2 NE 13	214,3	9,9 Multibeam-Pa MB-PS
ME863/111-1	25.01.12	01:14 42° 5,05' N	18° 56,46' E	68,8 NE 18	62,4	7,8 Multibeam-Pa MB-PS
ME863/111-1	25.01.12	01:58 41° 59,34' N	18° 51,38' E	82,6 NNE 15	213,3	10,2 Multibeam-Pa MB-PS
ME863/111-1	25.01.12	02:48 42° 4,75' N	18° 57,01' E	67,6 NNE 17	61,3	7,8 Multibeam-Pa MB-PS
ME863/111-1	25.01.12	03:18 42° 0,87' N	18° 53,68' E	63,6 NE 14	211,3	10 Multibeam-Pa MB-PS
ME863/112-1	25.01.12	04:26 42° 1,86' N	19° 6,48' E	35 N 8	261,7	-0,1 Ocean bottom OBS
ME863/112-1	25.01.12	04:26 42° 1,86' N	19° 6,48' E	35 N 8	261,7	-0,1 Ocean bottom OBS
ME863/113-1	25.01.12	04:46 42° 3,28' N	19° 4,60' E	50,5 N 10	316,4	0,4 Ocean bottom OBS
ME863/113-1	25.01.12	04:46 42° 3,28' N	19° 4,60' E	50,5 N 10	316,4	0,4 Ocean bottom OBS
ME863/114-1	25.01.12	07:00 42° 9,80' N	18° 45,52' E	104 N 4	17,8	2 Seismic refrac SEISREFR
ME863/114-1	25.01.12	07:20 42° 10,55' N	18° 45,72' E	103,4 ENE 3	6	2,1 Seismic refrac SEISREFR
ME863/114-1	25.01.12	07:22 42° 10,62' N	18° 45,74' E	102,7 NNW 5	25,6	2,1 Seismic refrac SEISREFR
ME863/114-1	25.01.12	07:48 42° 11,52' N	18° 45,98' E	98,5 N 8	18,1	2,8 Seismic refrac SEISREFR
ME863/114-1	25.01.12	08:56 42° 15,16' N	18° 49,00' E	43,6 WNW 8	127,7	4,8 Seismic refrac SEISREFR
ME863/114-1	25.01.12	13:08 42° 1,47' N	19° 7,00' E	31,7 NNW 14	129,7	4,3 Seismic refrac SEISREFR
ME863/114-1	25.01.12	13:45 42° 1,45' N	19° 5,47' E	40 NNW 12	317,2	3,3 Seismic refrac SEISREFR
ME863/114-1	25.01.12	14:16 42° 2,37' N	19° 4,31' E	45,2 NNW 12	326,2	2,5 Seismic refrac SEISREFR
ME863/114-1	25.01.12	14:39 42° 3,25' N	19° 3,54' E	50,1 NNE 11	325,8	2,8 Seismic refrac SEISREFR
ME863/115-1	25.01.12	15:30 42° 1,65' N	19° 6,61' E	39,3 NNW 12	243,3	0 Ocean bottom OBS
ME863/115-1	25.01.12	15:46 42° 1,73' N	19° 6,51' E	0 N 17	38,1	0,3 Ocean bottom OBS
ME863/116-1	25.01.12	16:04 42° 2,99' N	19° 4,73' E	0 N 11	248,4	0,5 Ocean bottom OBS
ME863/116-1	25.01.12	16:23 42° 3,15' N	19° 4,74' E	0 NNW 8	179,7	-0,5 Ocean bottom OBS
ME863/117-1	25.01.12	17:06 42° 7,53' N	18° 58,59' E	0 N 8	224,5	0 Ocean bottom OBS
ME863/117-1	25.01.12	17:22 42° 7,81' N	18° 58,61' E	0 N 7	65,9	0,4 Ocean bottom OBS
ME863/118-1	25.01.12	18:00 42° 5,44' N	18° 55,86' E	0 NNE 9	295,6	0,1 Ocean bottom OBS
ME863/118-1	25.01.12	18:29 42° 5,59' N	18° 55,84' E	66,6 NNE 7	4,4	0,7 Ocean bottom OBS
ME863/119-1	25.01.12	19:05 42° 4,84' N	18° 49,21' E	76,9 N 11	115,1	7,3 Multibeam-Pa MB-PS
ME863/119-1	25.01.12	20:08 41° 58,94' N	19° 0,43' E	69,3 NNW 9	131,1	7,1 Multibeam-Pa MB-PS
ME863/119-1	25.01.12	21:20 42° 4,97' N	18° 48,80' E	75,4 NNW 9	265,4	4,9 Multibeam-Pa MB-PS

ME863/119-1	25.01.12	22:29 41° 58,61' N	19° 0,17' E	70 NNW 9	225,2	5,3 Multibeam-Pa MB-PS
ME863/119-1	25.01.12	23:38 42° 4,63' N	18° 48,70' E	74,7 NNW 10	321,4	8,4 Multibeam-Pa MB-PS
ME863/119-1	26.01.12	00:42 41° 59,03' N	18° 58,84' E	68,9 NNW 7	123,8	10 Multibeam-Pa MB-PS
ME863/119-1	26.01.12	01:57 42° 4,34' N	18° 48,64' E	74,9 NNW 12	305,7	8,6 Multibeam-Pa MB-PS
ME863/119-1	26.01.12	03:10 41° 58,15' N	18° 59,56' E	70,7 NNW 14	318,6	3,5 Multibeam-Pa MB-PS
ME863/119-1	26.01.12	04:17 42° 4,16' N	18° 48,10' E	75 NNW 10	156,2	5,9 Multibeam-Pa MB-PS
ME863/119-1	26.01.12	05:25 41° 57,95' N	18° 59,33' E	69,9 N 10	299,4	5 Multibeam-Pa MB-PS
ME863/119-1	26.01.12	06:32 42° 3,82' N	18° 48,06' E	73,5 NNE 8	126	7,7 Multibeam-Pa MB-PS
ME863/119-1	26.01.12	07:25 41° 58,86' N	18° 57,35' E	67,5 N 11	125,1	9,9 Multibeam-Pa MB-PS
ME863/120-1	26.01.12	07:58 42° 0,89' N	19° 2,18' E	66,9 NNE 4	104,8	0,4 Ocean bottom OBS
ME863/120-1	26.01.12	08:00 42° 0,88' N	19° 2,20' E	68,3 NE 6	130,3	0 Ocean bottom OBS
ME863/121-1	26.01.12	08:32 42° 0,58' N	18° 57,36' E	69,8 NNE 9	53,1	0,8 Ocean bottom OBS
ME863/121-1	26.01.12	08:33 42° 0,58' N	18° 57,37' E	69,6 N 10	284,8	0,2 Ocean bottom OBS
ME863/122-1	26.01.12	09:03 42° 0,36' N	18° 52,57' E	70,8 NNE 9	94,1	0,4 Ocean bottom OBS
ME863/122-1	26.01.12	09:05 42° 0,36' N	18° 52,60' E	70,2 NNE 9	94,1	0,9 Ocean bottom OBS
ME863/123-1	26.01.12	09:35 42° 0,12' N	18° 47,79' E	87,6 N 6	312,7	0,8 Ocean bottom OBS
ME863/123-1	26.01.12	09:36 42° 0,13' N	18° 47,80' E	87,4 NNE 6	264,5	0,6 Ocean bottom OBS
ME863/124-1	26.01.12	10:07 41° 59,79' N	18° 43,00' E	132,9 NNW 9	105,5	0,2 Ocean bottom OBS
ME863/124-1	26.01.12	10:08 41° 59,79' N	18° 43,02' E	133,3 NW 9	45,8	0,4 Ocean bottom OBS
ME863/125-1	26.01.12	10:40 41° 59,55' N	18° 38,23' E	175,7 NNW 10	191	0,1 Ocean bottom OBS
ME863/125-1	26.01.12	10:41 41° 59,55' N	18° 38,22' E	175,8 NNW 10	222,3	0,2 Ocean bottom OBS
ME863/126-1	26.01.12	11:13 41° 59,25' N	18° 33,44' E	210,4 NNW 12	209,9	-0,1 Ocean bottom OBS
ME863/126-1	26.01.12	11:13 41° 59,25' N	18° 33,44' E	210,4 NNW 12	209,9	-0,1 Ocean bottom OBS
ME863/127-1	26.01.12	11:42 41° 59,01' N	18° 28,62' E	309,3 N 11	328,3	0,4 Ocean bottom OBS
ME863/127-1	26.01.12	11:42 41° 59,01' N	18° 28,62' E	309,3 N 11	328,3	0,4 Ocean bottom OBS
ME863/128-1	26.01.12	12:10 41° 58,74' N	18° 23,83' E	559,7 N 11	279,6	0,8 Ocean bottom OBS
ME863/128-1	26.01.12	12:10 41° 58,74' N	18° 23,83' E	559,7 N 11	279,6	0,8 Ocean bottom OBS
ME863/129-1	26.01.12	12:39 41° 58,49' N	18° 19,01' E	895 NNE 11	280,8	0,4 Ocean bottom OBS
ME863/129-1	26.01.12	12:39 41° 58,49' N	18° 19,01' E	895 NNE 11	280,8	0,4 Ocean bottom OBS
ME863/130-1	26.01.12	13:09 41° 58,23' N	18° 14,21' E	1097,5 NNE 8	313	0,2 Ocean bottom OBS
ME863/130-1	26.01.12	13:09 41° 58,23' N	18° 14,21' E	1097,5 NNE 8	313	0,2 Ocean bottom OBS
ME863/131-1	26.01.12	13:38 41° 57,90' N	18° 9,45' E	1179,5 N 10	313,3	0,6 Ocean bottom OBS
ME863/131-1	26.01.12	13:38 41° 57,90' N	18° 9,45' E	1179,5 N 10	313,3	0,6 Ocean bottom OBS
ME863/132-1	26.01.12	14:08 41° 57,65' N	18° 4,65' E	1202,2 N 10	344	0,7 Ocean bottom OBH
ME863/132-1	26.01.12	14:08 41° 57,65' N	18° 4,65' E	1202,2 N 10	344	0,7 Ocean bottom OBH
ME863/133-1	26.01.12	14:40 41° 57,38' N	17° 59,82' E	1205,4 NNW 9	124	0 Ocean bottom OBH
ME863/133-1	26.01.12	14:41 41° 57,39' N	17° 59,83' E	1208,1 NNW 9	91,7	0,4 Ocean bottom OBH

ME863/134-1	26.01.12	15:16 41° 57,12' N	17° 55,07' E	1209,5 N 7	248,4	0 Ocean bottom OBH
ME863/134-1	26.01.12	15:16 41° 57,12' N	17° 55,07' E	1209,5 N 7	248,4	0 Ocean bottom OBH
ME863/135-1	26.01.12	15:43 41° 56,84' N	17° 50,24' E	1205,4 N 8	288,3	0,4 Ocean bottom OBH
ME863/135-1	26.01.12	15:43 41° 56,84' N	17° 50,24' E	1205,4 N 8	288,3	0,4 Ocean bottom OBH
ME863/136-1	26.01.12	16:11 41° 56,55' N	17° 45,49' E	1203,8 N 9	274,3	0,5 Ocean bottom OBH
ME863/136-1	26.01.12	16:11 41° 56,55' N	17° 45,49' E	1203,8 N 9	274,3	0,5 Ocean bottom OBH
ME863/137-1	26.01.12	16:37 41° 56,31' N	17° 40,66' E	1186,6 N 7	342,5	1,4 Ocean bottom OBH
ME863/137-1	26.01.12	16:38 41° 56,33' N	17° 40,66' E	1187,3 N 8	1,6	1 Ocean bottom OBH
ME863/138-1	26.01.12	17:04 41° 56,02' N	17° 35,89' E	1125,9 N 9	321,8	1,1 Ocean bottom OBH
ME863/138-1	26.01.12	17:04 41° 56,02' N	17° 35,89' E	1125,9 N 9	321,8	1,1 Ocean bottom OBH
ME863/139-1	26.01.12	17:32 41° 55,77' N	17° 31,11' E	1094,6 N 10	324,8	0,8 Ocean bottom OBH
ME863/139-1	26.01.12	17:32 41° 55,77' N	17° 31,11' E	1094,6 N 10	324,8	0,8 Ocean bottom OBH
ME863/140-1	26.01.12	17:59 41° 55,48' N	17° 26,33' E	1015,5 NNW 7	314	1 Ocean bottom OBH
ME863/140-1	26.01.12	17:59 41° 55,48' N	17° 26,33' E	1015,5 NNW 7	314	1 Ocean bottom OBH
ME863/141-1	26.01.12	18:25 41° 55,25' N	17° 21,51' E	1006,2 N 6	0,2	1,3 Ocean bottom OBH
ME863/141-1	26.01.12	18:25 41° 55,25' N	17° 21,51' E	1006,2 N 6	0,2	1,3 Ocean bottom OBH
ME863/142-1	26.01.12	18:51 41° 55,00' N	17° 16,69' E	941,1 N 7	324,4	1 Ocean bottom OBH
ME863/142-1	26.01.12	18:51 41° 55,00' N	17° 16,69' E	941,1 N 7	324,4	1 Ocean bottom OBH
ME863/143-1	26.01.12	19:18 41° 54,73' N	17° 11,94' E	876,2 N 4	90,6	0,4 Ocean bottom OBH
ME863/143-1	26.01.12	19:19 41° 54,74' N	17° 11,93' E	875,8 N 5	3,8	0,5 Ocean bottom OBH
ME863/144-1	26.01.12	19:47 41° 54,45' N	17° 7,11' E	789 N 6	0,6	1,4 Ocean bottom OBH
ME863/144-1	26.01.12	19:48 41° 54,46' N	17° 7,11' E	787 N 8	25	0,2 Ocean bottom OBH
ME863/145-1	26.01.12	20:16 41° 54,14' N	17° 2,37' E	627,8 NNW 6	16,9	1,1 Ocean bottom OBH
ME863/145-1	26.01.12	20:18 41° 54,16' N	17° 2,37' E	627 N 6	348,3	0,6 Ocean bottom OBH
ME863/146-1	26.01.12	20:46 41° 53,89' N	16° 57,53' E	535,2 NNW 7	323,7	1 Ocean bottom OBH
ME863/146-1	26.01.12	20:47 41° 53,90' N	16° 57,52' E	534,3 NW 6	357,2	0,5 Ocean bottom OBH
ME863/147-1	26.01.12	21:17 41° 53,64' N	16° 52,73' E	331,4 NNE 7	5,5	1,2 Ocean bottom OBH
ME863/147-1	26.01.12	21:18 41° 53,66' N	16° 52,73' E	332,4 NNE 7	6,4	0,7 Ocean bottom OBH
ME863/148-1	26.01.12	21:47 41° 53,34' N	16° 47,95' E	187,8 N 8	337,1	2,2 Ocean bottom OBH
ME863/148-1	26.01.12	21:49 41° 53,37' N	16° 47,94' E	188,2 N 7	330,2	0,8 Ocean bottom OBH
ME863/149-1	26.01.12	22:18 41° 53,08' N	16° 43,19' E	140 NNW 8	251,4	0,8 Ocean bottom OBH
ME863/149-1	26.01.12	22:19 41° 53,08' N	16° 43,17' E	140 NW 9	271,6	0,9 Ocean bottom OBH
ME863/150-1	26.01.12	22:47 41° 52,80' N	16° 38,40' E	119,9 NNW 10	316,7	1 Ocean bottom OBH
ME863/150-1	26.01.12	22:49 41° 52,81' N	16° 38,38' E	119,2 NNW 10	300,6	0,7 Ocean bottom OBH
ME863/151-1	26.01.12	23:24 41° 52,55' N	16° 33,60' E	102,2 NW 10	357,2	0,3 Ocean bottom OBH
ME863/151-1	26.01.12	23:24 41° 52,55' N	16° 33,60' E	102,2 NW 10	357,2	0,3 Ocean bottom OBH
ME863/152-1	26.01.12	23:56 41° 52,31' N	16° 28,78' E	96,3 NNW 11	309,1	1,1 Ocean bottom OBH

ME863/152-1	26.01.12	23:57	41° 52,31' N	16° 28,77' E	89,2 NNW 10	271,1	0,3 Ocean bottom OBH
ME863/153-1	27.01.12	00:26	41° 52,06' N	16° 23,96' E	67,3 NNW 10	323,2	0,8 Ocean bottom OBH
ME863/153-1	27.01.12	00:26	41° 52,06' N	16° 23,96' E	67,3 NNW 10	323,2	0,8 Ocean bottom OBH
ME863/154-1	27.01.12	00:55	41° 51,74' N	16° 19,18' E	39,2 NW 12	321,9	1,2 Ocean bottom OBH
ME863/154-1	27.01.12	00:55	41° 51,74' N	16° 19,18' E	39,2 NW 12	321,9	1,2 Ocean bottom OBH
ME863/155-1	27.01.12	01:18	41° 51,62' N	16° 16,86' E	20,1 NW 13	19,1	0,6 Ocean bottom OBH
ME863/155-1	27.01.12	01:18	41° 51,62' N	16° 16,86' E	20,1 NW 13	19,1	0,6 Ocean bottom OBH
ME863/156-1	27.01.12	05:02	41° 45,06' N	16° 17,85' E	17,8 NW 8	334,9	1,8 Seismic refrac SEISREFR
ME863/156-1	27.01.12	05:02	41° 45,06' N	16° 17,85' E	17,8 NW 8	334,9	1,8 Seismic refrac SEISREFR
ME863/156-1	27.01.12	05:08	41° 45,28' N	16° 17,73' E	40,7 NW 9	336,5	2,2 Seismic refrac SEISREFR
ME863/156-1	27.01.12	05:17	41° 45,55' N	16° 17,60' E	51,3 NW 8	339,3	1,9 Seismic refrac SEISREFR
ME863/156-1	27.01.12	05:27	41° 45,85' N	16° 17,45' E	19,3 NW 8	339,8	1,8 Seismic refrac SEISREFR
ME863/156-1	27.01.12	05:31	41° 45,98' N	16° 17,39' E	16,5 NW 8	336	2,1 Seismic refrac SEISREFR
ME863/156-1	27.01.12	05:39	41° 46,23' N	16° 17,25' E	15,8 NW 7	337,5	2 Seismic refrac SEISREFR
ME863/156-1	27.01.12	05:53	41° 46,68' N	16° 17,03' E	30,4 WNW 7	344,7	2 Seismic refrac SEISREFR
ME863/156-1	27.01.12	06:00	41° 46,89' N	16° 16,91' E	15,2 NW 6	349,3	1,4 Seismic refrac SEISREFR
ME863/156-1	27.01.12	07:16	41° 51,61' N	16° 16,22' E	17 NNW 8	87,1	4,8 Seismic refrac SEISREFR
ME863/156-1	27.01.12	07:21	41° 51,61' N	16° 16,76' E	24,1 NNW 7	89,5	4,2 Seismic refrac SEISREFR
ME863/156-1	27.01.12	07:25	41° 51,64' N	16° 17,13' E	22,1 NNW 7	77,7	3,8 Seismic refrac SEISREFR
ME863/156-1	27.01.12	07:28	41° 51,69' N	16° 17,40' E	27,5 NNW 8	69,3	4,2 Seismic refrac SEISREFR
ME863/156-1	28.01.12	11:16	42° 1,04' N	19° 4,65' E	46,4 ESE 8	86	3,9 Seismic refrac SEISREFR
ME863/156-1	28.01.12	11:19	42° 1,06' N	19° 4,90' E	44,5 ESE 9	83	3,7 Seismic refrac SEISREFR
ME863/156-1	28.01.12	11:22	42° 1,07' N	19° 5,15' E	41,6 ESE 9	85	3,7 Seismic refrac SEISREFR
ME863/156-1	28.01.12	11:25	42° 1,09' N	19° 5,39' E	41,1 ESE 9	86,3	3,6 Seismic refrac SEISREFR
ME863/156-1	28.01.12	11:30	42° 1,11' N	19° 5,80' E	38 ESE 8	87,2	3,7 Seismic refrac SEISREFR
ME863/156-1	28.01.12	12:17	41° 59,33' N	19° 6,57' E	31,5 E 7	177,1	2,1 Seismic refrac SEISREFR
ME863/156-1	28.01.12	13:05	41° 57,63' N	19° 6,61' E	45,4 SE 3	181,2	2,1 Seismic refrac SEISREFR
ME863/157-1	28.01.12	14:25	42° 0,70' N	19° 1,99' E	0 E 5	0	0 Ocean bottom OBS
ME863/158-1	28.01.12	15:11	42° 0,70' N	18° 57,07' E	0 E 1	92,5	0,5 Ocean bottom OBS
ME863/158-1	28.01.12	15:34	42° 0,47' N	18° 57,32' E	0 NE 2	326	-0,3 Ocean bottom OBS
ME863/159-1	28.01.12	16:00	42° 0,43' N	18° 52,28' E	0 NE 2	93,1	3,5 Ocean bottom OBS
ME863/159-1	28.01.12	16:10	42° 0,33' N	18° 52,58' E	0 ENE 1	131,4	0,8 Ocean bottom OBS
ME863/160-1	28.01.12	16:37	42° 0,14' N	18° 47,61' E	0 E 1	102,5	2,1 Ocean bottom OBS
ME863/160-1	28.01.12	16:50	42° 0,06' N	18° 47,94' E	0 NNE 1	107,4	1,3 Ocean bottom OBS
ME863/161-1	28.01.12	17:17	41° 59,93' N	18° 42,65' E	0 NE 1	75,7	3,2 Ocean bottom OBS
ME863/161-1	28.01.12	17:30	41° 59,80' N	18° 43,10' E	0 ENE 1	109,9	0,6 Ocean bottom OBS
ME863/162-1	28.01.12	17:56	41° 59,64' N	18° 37,90' E	0 E 2	80,3	3 Ocean bottom OBS

ME863/162-1	28.01.12	18:16 41° 59,60' N	18° 38,21' E	0 ENE 1	104	1 Ocean bottom OBS
ME863/163-1	28.01.12	18:43 41° 59,37' N	18° 33,02' E	0 NE 2	47,4	3,9 Ocean bottom OBS
ME863/163-1	28.01.12	18:58 41° 59,28' N	18° 33,48' E	0 NE 2	92,8	1 Ocean bottom OBS
ME863/164-1	28.01.12	19:26 41° 58,92' N	18° 28,24' E	0 ENE 2	42,4	1 Ocean bottom OBS
ME863/164-1	28.01.12	19:54 41° 58,96' N	18° 28,58' E	0 ESE 1	109,7	0,7 Ocean bottom OBS
ME863/165-1	28.01.12	20:26 41° 58,68' N	18° 23,56' E	0 ESE 3	46,9	2,3 Ocean bottom OBS
ME863/165-1	28.01.12	20:41 41° 58,84' N	18° 23,89' E	0 E 2	47,9	1,3 Ocean bottom OBS
ME863/166-1	28.01.12	21:08 41° 58,26' N	18° 19,10' E	0 E 3	259,8	11,4 Ocean bottom OBS
ME863/166-1	28.01.12	21:29 41° 58,64' N	18° 18,98' E	0 ENE 3	73,1	0,9 Ocean bottom OBS
ME863/167-1	28.01.12	21:51 41° 58,08' N	18° 14,74' E	0 E 3	260,5	12,2 Ocean bottom OBS
ME863/167-1	28.01.12	22:16 41° 58,49' N	18° 14,10' E	0 ENE 4	51	0,9 Ocean bottom OBS
ME863/168-1	28.01.12	22:38 41° 57,78' N	18° 9,83' E	0 E 3	257,9	12,4 Ocean bottom OBS
ME863/168-1	28.01.12	23:07 41° 58,11' N	18° 9,16' E	0 ESE 4	291,7	0,3 Ocean bottom OBS
ME863/169-1	28.01.12	23:26 41° 57,61' N	18° 5,43' E	0 ESE 7	260,2	12,5 Ocean bottom OBH
ME863/169-1	28.01.12	23:47 41° 57,71' N	18° 4,55' E	0 ESE 6	152	0,2 Ocean bottom OBH
ME863/170-1	29.01.12	00:03 41° 57,66' N	18° 1,72' E	0 ESE 7	270	12,6 Ocean bottom OBH
ME863/170-1	29.01.12	00:39 41° 57,24' N	17° 59,70' E	0 ESE 8	272,2	0,6 Ocean bottom OBH
ME863/171-1	29.01.12	00:58 41° 57,32' N	17° 56,26' E	0 E 7	270,7	12,4 Ocean bottom OBH
ME863/171-1	29.01.12	01:22 41° 57,06' N	17° 55,00' E	0 ESE 9	215,3	0,6 Ocean bottom OBH
ME863/172-1	29.01.12	01:39 41° 57,08' N	17° 52,12' E	0 ESE 10	272,3	12,5 Ocean bottom OBH
ME863/172-1	29.01.12	02:04 41° 56,90' N	17° 50,19' E	0 E 11	0	0,3 Ocean bottom OBH
ME863/173-1	29.01.12	02:19 41° 56,85' N	17° 47,78' E	0 ESE 9	268,1	12,5 Ocean bottom OBH
ME863/173-1	29.01.12	02:50 41° 56,57' N	17° 45,44' E	0 ESE 9	204,3	0,5 Ocean bottom OBH
ME863/174-1	29.01.12	03:05 41° 56,27' N	17° 43,05' E	0 ESE 8	262,4	12,6 Ocean bottom OBH
ME863/174-1	29.01.12	03:47 41° 56,33' N	17° 40,84' E	0 E 7	84,7	0,3 Ocean bottom OBH
ME863/175-1	29.01.12	04:01 41° 56,05' N	17° 38,27' E	0 ESE 7	259,7	12,2 Ocean bottom OBH
ME863/175-1	29.01.12	04:28 41° 55,92' N	17° 36,13' E	0 ESE 6	129,4	1,4 Ocean bottom OBH
ME863/176-1	29.01.12	04:44 41° 55,56' N	17° 33,20' E	0 SSW 4	264,2	12 Ocean bottom OBH
ME863/176-1	29.01.12	05:22 41° 55,56' N	17° 31,27' E	0 S 2	172	0,5 Ocean bottom OBH
ME863/177-1	29.01.12	05:36 41° 55,62' N	17° 28,67' E	0 SSE 3	276,1	12,5 Ocean bottom OBH
ME863/177-1	29.01.12	06:05 41° 55,36' N	17° 26,54' E	0 SSW 4	141,4	0,9 Ocean bottom OBH
ME863/178-1	29.01.12	06:25 41° 56,65' N	17° 23,27' E	0 S 6	250,9	11,2 Ocean bottom OBH
ME863/178-1	29.01.12	07:01 41° 55,20' N	17° 21,70' E	0 SE 2	124,5	0,9 Ocean bottom OBH
ME863/180-1	29.01.12	07:27 41° 54,81' N	17° 17,67' E	0 ESE 4	261	11,9 Ocean bottom OBH
ME863/179-1	29.01.12	07:47 41° 54,96' N	17° 16,53' E	0 ESE 6	254	-0,3 Ocean bottom OBH
ME863/179-1	29.01.12	08:21 41° 54,93' N	17° 16,80' E	0 ESE 9	25,7	0,7 Ocean bottom OBH
ME863/180-1	29.01.12	08:53 41° 54,63' N	17° 11,65' E	0 ESE 8	332,7	-0,2 Ocean bottom OBH

ME863/180-1	29.01.12	09:11 41° 54,61' N	17° 11,94' E	0 ESE 8	154,2	0,9 Ocean bottom OBH
ME863/181-1	29.01.12	09:28 41° 54,61' N	17° 8,94' E	0 E 6	276,8	11,9 Ocean bottom OBH
ME863/181-1	29.01.12	10:10 41° 54,39' N	17° 6,98' E	0 E 8	132,8	0,2 Ocean bottom OBH
ME863/182-1	29.01.12	10:28 41° 54,38' N	17° 3,95' E	0 ESE 9	273	12,7 Ocean bottom OBH
ME863/182-1	29.01.12	10:46 41° 54,18' N	17° 2,32' E	0 ESE 8	336,7	0 Ocean bottom OBH
ME863/183-1	29.01.12	11:08 41° 54,17' N	16° 58,52' E	0 ESE 7	264,8	12,8 Ocean bottom OBH
ME863/183-1	29.01.12	11:27 41° 53,86' N	16° 57,31' E	0 ESE 8	240,7	0,7 Ocean bottom OBH
ME863/184-1	29.01.12	11:45 41° 53,85' N	16° 53,72' E	0 ESE 8	273,1	12,6 Ocean bottom OBH
ME863/184-1	29.01.12	12:01 41° 53,70' N	16° 52,63' E	0 ESE 9	201,6	0,6 Ocean bottom OBH
ME863/185-1	29.01.12	12:19 41° 53,62' N	16° 49,36' E	0 ESE 8	268,8	12,6 Ocean bottom OBH
ME863/185-1	29.01.12	14:47 41° 55,24' N	16° 43,24' E	0 ESE 7	226,4	0,6 Ocean bottom OBH
ME863/185-1	29.01.12	14:49 41° 55,23' N	16° 43,20' E	0 E 7	243,5	0,3 Ocean bottom OBH
ME863/186-1	29.01.12	15:12 41° 53,16' N	16° 42,84' E	0 ESE 7	93,1	2 Ocean bottom OBH
ME863/186-1	29.01.12	15:27 41° 53,05' N	16° 43,16' E	0 E 8	184,5	0,3 Ocean bottom OBH
ME863/187-1	29.01.12	15:53 41° 52,93' N	16° 38,12' E	0 E 8	157,8	2,5 Ocean bottom OBH
ME863/187-1	29.01.12	16:06 41° 52,77' N	16° 38,42' E	0 E 8	118,7	1,1 Ocean bottom OBH
ME863/188-1	29.01.12	16:34 41° 52,65' N	16° 33,29' E	0 E 8	148,2	0,6 Ocean bottom OBH
ME863/188-1	29.01.12	16:44 41° 52,50' N	16° 33,59' E	0 ESE 7	138,6	1,2 Ocean bottom OBH
ME863/189-1	29.01.12	17:10 41° 52,42' N	16° 28,48' E	0 E 9	156,8	2,7 Ocean bottom OBH
ME863/189-1	29.01.12	17:21 41° 52,28' N	16° 28,80' E	0 ESE 8	100,2	0,7 Ocean bottom OBH
ME863/190-1	29.01.12	17:57 41° 52,15' N	16° 23,73' E	0 W 6	162	3,6 Ocean bottom OBH
ME863/190-1	29.01.12	18:06 41° 52,03' N	16° 24,03' E	0 WNW 4	95,9	1,2 Ocean bottom OBH
ME863/191-1	29.01.12	18:33 41° 51,66' N	16° 19,43' E	0 W 4	311,1	2,1 Ocean bottom OBH
ME863/191-1	29.01.12	18:40 41° 51,66' N	16° 19,18' E	0 W 4	254,4	1,6 Ocean bottom OBH
ME863/192-1	29.01.12	18:56 41° 51,58' N	16° 17,16' E	0 WSW 4	281,9	2,1 Ocean bottom OBH
ME863/192-1	29.01.12	19:05 41° 51,52' N	16° 16,82' E	0 WSW 3	230,5	1 Ocean bottom OBH
ME863/193-1	30.01.12	03:53 43° 12,10' N	15° 6,21' E	200,2 NE 11	335,3	0,3 Ocean bottom OBS
ME863/193-1	30.01.12	03:53 43° 12,10' N	15° 6,21' E	200,2 NE 11	335,3	0,3 Ocean bottom OBS
ME863/194-1	30.01.12	04:56 43° 6,07' N	15° 18,02' E	211,7 NE 9	323,5	0,8 Ocean bottom OBS
ME863/194-1	30.01.12	04:57 43° 6,08' N	15° 18,02' E	210,2 NE 9	358,7	0,4 Ocean bottom OBS
ME863/195-1	30.01.12	05:40 43° 2,08' N	15° 25,81' E	175,6 NNE 8	25,1	1,3 Ocean bottom OBS
ME863/195-1	30.01.12	05:40 43° 2,08' N	15° 25,81' E	175,6 NNE 8	25,1	1,3 Ocean bottom OBS
ME863/196-1	30.01.12	06:09 43° 0,09' N	15° 29,69' E	162,5 NE 7	304,2	0,2 Ocean bottom OBS
ME863/196-1	30.01.12	06:09 43° 0,09' N	15° 29,69' E	162,5 NE 7	304,2	0,2 Ocean bottom OBS
ME863/197-1	30.01.12	06:36 42° 58,08' N	15° 33,63' E	152,3 NNE 8	14,2	1,3 Ocean bottom OBS
ME863/197-1	30.01.12	06:36 42° 58,08' N	15° 33,63' E	152,3 NNE 8	14,2	1,3 Ocean bottom OBS
ME863/198-1	30.01.12	07:02 42° 56,07' N	15° 37,51' E	148,2 NNE 8	272	0,9 Ocean bottom OBS

ME863/198-1	30.01.12	07:03 42° 56,07' N	15° 37,49' E	148,8 NNE 7	268	0,9 Ocean bottom OBS
ME863/199-1	30.01.12	07:31 42° 54,12' N	15° 41,41' E	148,6 E 5	26,5	0,7 Ocean bottom OBS
ME863/199-1	30.01.12	07:32 42° 54,12' N	15° 41,42' E	148,2 E 5	33,9	0,3 Ocean bottom OBS
ME863/200-1	30.01.12	08:02 42° 52,12' N	15° 45,37' E	147,5 ENE 3	60,2	1 Ocean bottom OBS
ME863/200-1	30.01.12	08:03 42° 52,12' N	15° 45,39' E	146,7 E 4	73,1	0,6 Ocean bottom OBS
ME863/201-1	30.01.12	08:33 42° 50,05' N	15° 49,21' E	155,9 E 7	43,9	1,5 Ocean bottom OBS
ME863/201-1	30.01.12	08:34 42° 50,06' N	15° 49,23' E	156 ENE 6	41,8	1,2 Ocean bottom OBS
ME863/202-1	30.01.12	09:03 42° 48,06' N	15° 53,13' E	159,1 NE 7	67	1,1 Ocean bottom OBS
ME863/202-1	30.01.12	09:04 42° 48,06' N	15° 53,14' E	158,9 ENE 7	225,6	0,3 Ocean bottom OBS
ME863/203-1	30.01.12	10:12 42° 46,06' N	15° 56,97' E	163,2 NE 3	71,7	1,2 Ocean bottom OBS
ME863/203-1	30.01.12	10:13 42° 46,06' N	15° 56,99' E	162,1 ENE 4	56,8	0,9 Ocean bottom OBS
ME863/204-1	30.01.12	10:39 42° 44,08' N	16° 0,84' E	163,6 NNE 3	60,5	2,2 Ocean bottom OBS
ME863/204-1	30.01.12	10:40 42° 44,09' N	16° 0,87' E	165,4 NE 3	46,4	0,9 Ocean bottom OBS
ME863/205-1	30.01.12	11:13 42° 42,09' N	16° 4,79' E	165,5 NNE 5	29,6	0,1 Ocean bottom OBH
ME863/205-1	30.01.12	11:13 42° 42,09' N	16° 4,79' E	165,5 NNE 5	29,6	0,1 Ocean bottom OBH
ME863/206-1	30.01.12	11:46 42° 40,10' N	16° 8,70' E	167,1 NE 5	127,3	0,7 Ocean bottom OBH
ME863/206-1	30.01.12	11:47 42° 40,09' N	16° 8,71' E	167,2 NE 4	171,2	0,6 Ocean bottom OBH
ME863/207-1	30.01.12	12:15 42° 38,06' N	16° 12,59' E	169,5 NE 2	297,9	1,2 Ocean bottom OBH
ME863/207-1	30.01.12	12:15 42° 38,06' N	16° 12,59' E	169,5 NE 2	297,9	1,2 Ocean bottom OBH
ME863/208-1	30.01.12	12:44 42° 36,03' N	16° 16,52' E	172,8 NE 5	298,1	1,7 Ocean bottom OBH
ME863/208-1	30.01.12	12:44 42° 36,03' N	16° 16,52' E	172,8 NE 5	298,1	1,7 Ocean bottom OBH
ME863/209-1	30.01.12	13:14 42° 34,06' N	16° 20,36' E	177,9 ENE 4	317,5	1,4 Ocean bottom OBH
ME863/209-1	30.01.12	13:14 42° 34,06' N	16° 20,36' E	177,9 ENE 4	317,5	1,4 Ocean bottom OBH
ME863/210-1	30.01.12	13:43 42° 32,06' N	16° 24,30' E	183 NE 3	329,8	1,7 Ocean bottom OBH
ME863/210-1	30.01.12	13:43 42° 32,06' N	16° 24,30' E	183 NE 3	329,8	1,7 Ocean bottom OBH
ME863/211-1	30.01.12	14:12 42° 30,04' N	16° 28,19' E	187,1 NE 4	330,7	1,6 Ocean bottom OBH
ME863/211-1	30.01.12	14:12 42° 30,04' N	16° 28,19' E	187,1 NE 4	330,7	1,6 Ocean bottom OBH
ME863/212-1	30.01.12	14:40 42° 28,04' N	16° 32,09' E	189,3 NNE 4	285	1,3 Ocean bottom OBH
ME863/212-1	30.01.12	14:40 42° 28,04' N	16° 32,09' E	189,3 NNE 4	285	1,3 Ocean bottom OBH
ME863/213-1	30.01.12	15:11 42° 26,04' N	16° 35,97' E	194,5 NE 3	317,8	1,3 Ocean bottom OBH
ME863/213-1	30.01.12	15:11 42° 26,04' N	16° 35,97' E	194,5 NE 3	317,8	1,3 Ocean bottom OBH
ME863/214-1	30.01.12	15:37 42° 24,00' N	16° 39,92' E	198,4 NNE 3	280,2	1,1 Ocean bottom OBH
ME863/214-1	30.01.12	15:37 42° 24,00' N	16° 39,92' E	198,4 NNE 3	280,2	1,1 Ocean bottom OBH
ME863/215-1	30.01.12	16:05 42° 22,01' N	16° 43,79' E	204,8 NNE 3	293,4	0,9 Ocean bottom OBH
ME863/215-1	30.01.12	16:05 42° 22,01' N	16° 43,79' E	204,8 NNE 3	293,4	0,9 Ocean bottom OBH
ME863/216-1	30.01.12	16:31 42° 20,00' N	16° 47,69' E	235 N 4	290,7	1,2 Ocean bottom OBH
ME863/216-1	30.01.12	16:31 42° 20,00' N	16° 47,69' E	235 N 4	290,7	1,2 Ocean bottom OBH

ME863/217-1	30.01.12	16:58 42° 18,01' N	16° 51,57' E	483,2 N 3	284,1	0,8 Ocean bottom OBH
ME863/217-1	30.01.12	16:58 42° 18,01' N	16° 51,57' E	483,2 N 3	284,1	0,8 Ocean bottom OBH
ME863/218-1	30.01.12	17:26 42° 16,01' N	16° 55,48' E	607,1 NNW 2	273,8	0,8 Ocean bottom OBH
ME863/218-1	30.01.12	17:26 42° 16,01' N	16° 55,48' E	607,1 NNW 2	273,8	0,8 Ocean bottom OBH
ME863/219-1	30.01.12	17:53 42° 13,99' N	16° 59,38' E	745,5 S 1	275,9	0,9 Ocean bottom OBH
ME863/219-1	30.01.12	17:53 42° 13,99' N	16° 59,38' E	745,5 S 1	275,9	0,9 Ocean bottom OBH
ME863/220-1	30.01.12	18:21 42° 12,03' N	17° 3,27' E	832 SSW 2	313,9	0,8 Ocean bottom OBH
ME863/220-1	30.01.12	18:21 42° 12,03' N	17° 3,27' E	832 SSW 2	313,9	0,8 Ocean bottom OBH
ME863/221-1	30.01.12	18:48 42° 10,01' N	17° 7,18' E	912 SW 2	257	1,1 Ocean bottom OBH
ME863/221-1	30.01.12	18:48 42° 10,01' N	17° 7,18' E	912 SW 2	257	1,1 Ocean bottom OBH
ME863/222-1	30.01.12	19:16 42° 8,00' N	17° 11,13' E	983,4 SW 2	246,8	1,2 Ocean bottom OBH
ME863/222-1	30.01.12	19:19 42° 7,99' N	17° 11,08' E	982,6 WSW 2	275,8	0,9 Ocean bottom OBH
ME863/223-1	30.01.12	19:48 42° 5,98' N	17° 14,97' E	1040,9 SSW 0	283,4	1,1 Ocean bottom OBH
ME863/223-1	30.01.12	19:49 42° 5,99' N	17° 14,94' E	1038,7 ESE 1	285,3	1,1 Ocean bottom OBH
ME863/224-1	30.01.12	20:18 42° 3,96' N	17° 18,91' E	1076 ESE 1	286,3	1,5 Ocean bottom OBH
ME863/224-1	30.01.12	20:20 42° 3,97' N	17° 18,87' E	1074 E 1	274,5	0,6 Ocean bottom OBH
ME863/225-1	30.01.12	20:49 42° 1,99' N	17° 22,81' E	1120,9 SE 7	276,1	1,4 Ocean bottom OBH
ME863/225-1	30.01.12	20:50 42° 1,99' N	17° 22,78' E	1122,1 SE 8	257	1,5 Ocean bottom OBH
ME863/226-1	30.01.12	21:21 42° 0,01' N	17° 26,63' E	1142,7 SE 9	128,8	1,3 Ocean bottom OBH
ME863/226-1	30.01.12	21:22 42° 0,00' N	17° 26,65' E	1142,1 ESE 9	152,3	0,8 Ocean bottom OBH
ME863/227-1	30.01.12	21:53 41° 57,99' N	17° 30,50' E	1126,2 ESE 10	136,5	1,1 Ocean bottom OBH
ME863/227-1	30.01.12	21:54 41° 57,99' N	17° 30,50' E	1126,5 ESE 9	322,3	0,1 Ocean bottom OBH
ME863/228-1	30.01.12	22:26 41° 55,99' N	17° 34,43' E	1108,7 ESE 14	86,7	1,4 Ocean bottom OBH
ME863/228-1	30.01.12	22:27 41° 55,99' N	17° 34,45' E	1108,3 ESE 12	90,6	1 Ocean bottom OBH
ME863/229-1	30.01.12	23:32 41° 51,96' N	17° 42,29' E	1145,7 ESE 14	114,8	1,8 Seismic refrac SEISREFR
ME863/229-1	30.01.12	23:56 41° 51,39' N	17° 43,42' E	1158,7 E 13	121,6	2,3 Seismic refrac SEISREFR
ME863/229-1	31.01.12	00:40 41° 51,79' N	17° 45,07' E	1188,8 ESE 12	312,7	4,4 Seismic refrac SEISREFR
ME863/229-1	31.01.12	01:22 41° 52,82' N	17° 40,66' E	1127,9 ESE 11	311,2	5,1 Seismic refrac SEISREFR
ME863/229-1	31.01.12	01:22 41° 52,82' N	17° 40,66' E	1127,9 ESE 11	311,2	5,1 Seismic refrac SEISREFR
ME863/229-1	31.01.12	01:26 41° 53,01' N	17° 40,32' E	1124,2 E 11	301	4,8 Seismic refrac SEISREFR
ME863/229-1	31.01.12	01:29 41° 53,15' N	17° 40,05' E	1121,6 ESE 10	305,8	4,7 Seismic refrac SEISREFR
ME863/229-1	31.01.12	01:35 41° 53,40' N	17° 39,51' E	1119,9 ESE 10	304	4,9 Seismic refrac SEISREFR
ME863/229-1	31.01.12	01:45 41° 53,88' N	17° 38,58' E	1108,6 ESE 12	303,3	5,1 Seismic refrac SEISREFR
ME863/229-1	31.01.12	21:37 42° 52,32' N	15° 44,82' E	146,6 SSE 14	308	5 Seismic refrac SEISREFR
ME863/229-1	31.01.12	21:43 42° 52,59' N	15° 44,30' E	147,4 SSE 15	304,6	4,1 Seismic refrac SEISREFR
ME863/229-1	31.01.12	21:44 42° 52,62' N	15° 44,22' E	147 SSE 15	310	4,1 Seismic refrac SEISREFR
ME863/229-1	31.01.12	21:44 42° 52,62' N	15° 44,22' E	147 SSE 15	310	4,1 Seismic refrac SEISREFR

ME863/229-1	31.01.12	21:47 42° 52,74' N	15° 43,98' E	146,8 SSE 12	303,1	4,1 Seismic refrac SEISREFR
ME863/229-1	31.01.12	21:50 42° 52,86' N	15° 43,75' E	147,1 SE 14	304,7	4,1 Seismic refrac SEISREFR
ME863/229-1	31.01.12	22:09 42° 52,44' N	15° 42,83' E	153,8 SE 14	150,6	2,7 Seismic refrac SEISREFR
ME863/229-1	31.01.12	22:40 42° 51,57' N	15° 43,72' E	155,2 SE 14	140,8	2 Seismic refrac SEISREFR
ME863/229-1	31.01.12	22:42 42° 51,52' N	15° 43,79' E	154,4 SE 14	139,8	2,2 Seismic refrac SEISREFR
ME863/229-1	31.01.12	23:01 42° 51,11' N	15° 44,51' E	156,2 SE 13	127,3	1,9 Seismic refrac SEISREFR
ME863/230-1	02.02.12	05:00 43° 11,93' N	15° 6,00' E	0 NE 14	73,1	1,5 Ocean bottom OBS
ME863/230-1	02.02.12	05:15 43° 11,90' N	15° 6,09' E	0 NE 14	134,4	0,5 Ocean bottom OBS
ME863/231-1	02.02.12	06:36 43° 5,93' N	15° 17,84' E	0 NE 9	354,5	1,3 Ocean bottom OBS
ME863/231-1	02.02.12	06:53 43° 6,01' N	15° 18,14' E	0 NE 9	213,1	0,8 Ocean bottom OBS
ME863/232-1	02.02.12	07:37 43° 1,90' N	15° 25,49' E	0 NE 9	78,9	5,1 Ocean bottom OBS
ME863/232-1	02.02.12	07:50 43° 2,06' N	15° 25,90' E	0 NE 8	201,3	0,3 Ocean bottom OBS
ME863/233-1	02.02.12	08:15 42° 59,89' N	15° 29,47' E	0 NE 8	81,2	4,5 Ocean bottom OBS
ME863/233-1	02.02.12	08:30 43° 0,12' N	15° 29,77' E	0 NE 7	93,9	0,2 Ocean bottom OBS
ME863/234-1	02.02.12	08:54 42° 57,90' N	15° 33,23' E	0 NE 8	114,9	9,5 Ocean bottom OBS
ME863/234-1	02.02.12	09:11 42° 58,07' N	15° 33,76' E	0 NNE 5	131,5	0,5 Ocean bottom OBS
ME863/235-1	02.02.12	09:57 42° 55,81' N	15° 37,23' E	0 NNE 4	39,1	5,1 Ocean bottom OBS
ME863/235-1	02.02.12	10:09 42° 56,11' N	15° 37,53' E	0 NE 4	41,4	0,3 Ocean bottom OBS
ME863/236-1	02.02.12	10:38 42° 54,13' N	15° 40,89' E	0 E 5	108,8	2,6 Ocean bottom OBS
ME863/236-1	02.02.12	10:50 42° 54,16' N	15° 41,34' E	0 E 4	229,3	0,3 Ocean bottom OBS
ME863/237-1	02.02.12	11:19 42° 52,11' N	15° 44,96' E	0 E 8	78,9	3,5 Ocean bottom OBS
ME863/237-1	02.02.12	11:28 42° 52,16' N	15° 45,37' E	0 ESE 8	337	0,4 Ocean bottom OBS
ME863/238-1	02.02.12	11:58 42° 50,06' N	15° 48,89' E	0 ENE 11	104	3,4 Ocean bottom OBS
ME863/238-1	02.02.12	12:06 42° 50,04' N	15° 49,19' E	0 ENE 9	146,1	0,7 Ocean bottom OBS
ME863/239-1	02.02.12	12:34 42° 48,07' N	15° 52,78' E	0 ENE 8	76	3,4 Ocean bottom OBS
ME863/239-1	02.02.12	12:42 42° 48,04' N	15° 53,09' E	0 ENE 7	126,2	0,7 Ocean bottom OBS
ME863/240-1	02.02.12	13:10 42° 46,03' N	15° 56,64' E	0 E 8	65	3,1 Ocean bottom OBS
ME863/240-1	02.02.12	13:18 42° 46,02' N	15° 56,94' E	0 E 8	314,8	0,3 Ocean bottom OBS
ME863/241-1	02.02.12	13:48 42° 44,03' N	16° 0,56' E	0 E 6	54,6	3,4 Ocean bottom OBS
ME863/241-1	02.02.12	13:57 42° 44,09' N	16° 0,81' E	0 ENE 7	41,9	0,5 Ocean bottom OBS
ME863/242-1	02.02.12	14:24 42° 41,94' N	16° 4,48' E	0 NE 9	65,5	4 Ocean bottom OBH
ME863/242-1	02.02.12	14:33 42° 42,08' N	16° 4,75' E	0 NE 10	129,6	0,7 Ocean bottom OBH
ME863/243-1	02.02.12	14:59 42° 39,88' N	16° 8,47' E	0 NE 8	55,2	4,2 Ocean bottom OBH
ME863/243-1	02.02.12	15:10 42° 40,08' N	16° 8,66' E	0 NE 9	92,7	0,7 Ocean bottom OBH
ME863/244-1	02.02.12	15:33 42° 37,86' N	16° 12,28' E	0 NE 6	72,1	4,4 Ocean bottom OBH
ME863/244-1	02.02.12	15:50 42° 38,01' N	16° 12,62' E	0 NNE 5	182,6	-0,1 Ocean bottom OBH
ME863/245-1	02.02.12	16:12 42° 35,84' N	16° 16,18' E	0 ENE 8	90	4,8 Ocean bottom OBH

ME863/245-1	02.02.12	16:24 42° 36,00' N	16° 16,48' E	0 ENE 8	125,9	0,6 Ocean bottom OBH
ME863/246-1	02.02.12	16:47 42° 33,87' N	16° 20,04' E	0 NE 7	83,3	4,9 Ocean bottom OBH
ME863/246-1	02.02.12	16:57 42° 34,05' N	16° 20,32' E	0 NE 6	357,2	0,4 Ocean bottom OBH
ME863/247-1	02.02.12	17:25 42° 31,99' N	16° 23,82' E	0 NE 7	305,4	1,6 Ocean bottom OBH
ME863/247-1	02.02.12	17:48 42° 32,03' N	16° 24,21' E	0 NE 8	324,1	0 Ocean bottom OBH
ME863/248-1	02.02.12	18:15 42° 29,91' N	16° 27,98' E	0 NNE 7	54,5	2,4 Ocean bottom OBH
ME863/248-1	02.02.12	18:25 42° 30,01' N	16° 28,22' E	0 NNE 7	137,3	0,4 Ocean bottom OBH
ME863/249-1	02.02.12	18:47 42° 27,89' N	16° 31,76' E	0 NNE 8	108,3	4,3 Ocean bottom OBH
ME863/249-1	02.02.12	18:58 42° 27,98' N	16° 32,09' E	0 NE 7	136,1	0,6 Ocean bottom OBH
ME863/250-1	02.02.12	19:21 42° 25,91' N	16° 35,66' E	0 NE 11	36,1	3,5 Ocean bottom OBH
ME863/250-1	02.02.12	19:35 42° 26,07' N	16° 35,92' E	0 NE 10	306,9	0,8 Ocean bottom OBH
ME863/251-1	02.02.12	20:08 42° 23,85' N	16° 39,61' E	0 NNE 11	58,6	4,5 Ocean bottom OBH
ME863/251-1	02.02.12	20:27 42° 23,97' N	16° 39,83' E	0 NE 10	309,7	0,8 Ocean bottom OBH
ME863/252-1	02.02.12	20:57 42° 21,87' N	16° 43,53' E	0 NE 9	52,8	3,1 Ocean bottom OBH
ME863/252-1	02.02.12	21:23 42° 21,75' N	16° 43,77' E	0 NNE 7	210,9	0,1 Ocean bottom OBH
ME863/253-1	02.02.12	21:47 42° 19,81' N	16° 47,48' E	0 NE 7	24,7	3,2 Ocean bottom OBH
ME863/253-1	02.02.12	21:57 42° 19,93' N	16° 47,65' E	0 NNE 6	197,9	-0,1 Ocean bottom OBH
ME863/254-1	02.02.12	22:21 42° 17,88' N	16° 51,03' E	0 NE 5	130,4	10,4 Ocean bottom OBH
ME863/254-1	02.02.12	22:35 42° 17,90' N	16° 51,60' E	0 NNE 5	124,2	0,4 Ocean bottom OBH
ME863/255-1	02.02.12	22:55 42° 16,22' N	16° 54,39' E	0 NNE 3	131	11,8 Ocean bottom OBH
ME863/255-1	02.02.12	23:22 42° 15,92' N	16° 55,62' E	0 NNE 3	79	0,4 Ocean bottom OBH
ME863/256-1	02.02.12	23:40 42° 14,31' N	16° 58,19' E	0 NE 3	132,6	11,9 Ocean bottom OBH
ME863/256-1	03.02.12	00:05 42° 14,01' N	16° 59,47' E	0 NNE 2	74,9	1,2 Ocean bottom OBH
ME863/257-1	03.02.12	00:20 42° 12,73' N	17° 1,52' E	0 NNE 2	132	11,9 Ocean bottom OBH
ME863/257-1	03.02.12	00:39 42° 12,07' N	17° 3,31' E	0 NNE 3	30,3	0,6 Ocean bottom OBH
ME863/258-1	03.02.12	00:55 42° 10,69' N	17° 5,48' E	0 NE 3	133,2	11,4 Ocean bottom OBH
ME863/258-1	03.02.12	01:22 42° 10,07' N	17° 7,09' E	0 ESE 14	258,4	1 Ocean bottom OBH
ME863/259-1	03.02.12	01:44 42° 8,73' N	17° 9,56' E	0 ESE 15	0	9,2 Ocean bottom OBH
ME863/259-1	03.02.12	02:04 42° 7,99' N	17° 10,93' E	0 ESE 15	238,2	0,3 Ocean bottom OBH
ME863/260-1	03.02.12	02:22 42° 7,15' N	17° 12,04' E	0 ESE 16	122,2	7,6 Ocean bottom OBH
ME863/260-1	03.02.12	02:56 42° 5,97' N	17° 14,78' E	0 ESE 15	225,9	-0,5 Ocean bottom OBH
ME863/261-1	03.02.12	04:12 42° 4,21' N	17° 18,13' E	0 SE 14	53,6	6,1 Ocean bottom OBH
ME863/261-1	03.02.12	04:38 42° 4,01' N	17° 18,71' E	0 SSW 10	28	0,7 Ocean bottom OBH
ME863/262-1	03.02.12	04:51 42° 3,18' N	17° 20,53' E	0 SSW 11	116,6	8,4 Ocean bottom OBH
ME863/262-1	03.02.12	05:20 42° 2,02' N	17° 22,68' E	0 SW 8	285	-0,1 Ocean bottom OBH
ME863/263-1	03.02.12	05:33 42° 1,38' N	17° 24,19' E	0 SW 9	112,5	10,7 Ocean bottom OBH
ME863/263-1	03.02.12	05:59 41° 59,87' N	17° 26,43' E	0 SW 11	258,8	0,8 Ocean bottom OBH

ME863/264-1	03.02.12	06:09	41° 59,30' N	17° 27,81' E	0 SW 10	115,3	11 Ocean bottom OBH
ME863/264-1	03.02.12	06:38	41° 57,97' N	17° 30,45' E	0 SW 9	242,7	0,6 Ocean bottom OBH
ME863/265-1	03.02.12	06:48	41° 57,37' N	17° 31,76' E	0 SW 10	116,1	10,9 Ocean bottom OBH
ME863/265-1	03.02.12	07:16	41° 56,02' N	17° 34,34' E	0 WSW 9	320,6	0,5 Ocean bottom OBH
ME863/266-1	03.02.12	10:12	42° 18,46' N	18° 0,17' E	997,2 WSW 6	37,6	11,4 Multibeam-Pa MB-PS
ME863/266-1	03.02.12	11:48	42° 8,75' N	18° 16,41' E	888,8 SW 3	130,2	9,9 Multibeam-Pa MB-PS
ME863/266-1	03.02.12	11:58	42° 7,57' N	18° 15,58' E	946,3 S 2	230,1	10 Multibeam-Pa MB-PS
ME863/266-1	03.02.12	13:45	42° 18,69' N	17° 57,24' E	1021,7 E 3	307,3	9,9 Multibeam-Pa MB-PS
ME863/266-1	03.02.12	13:54	42° 18,66' N	17° 55,31' E	1049,6 SSE 3	270,5	10 Multibeam-Pa MB-PS
ME863/266-1	03.02.12	14:16	42° 16,47' N	17° 57,69' E	1101,9 SE 3	115	9,2 Multibeam-Pa MB-PS