

Torsten Kanzow  
Alfred-Wegener-Institut Bremerhaven  
Helmholtz Zentrum für Polar- und Meeresforschung  
Klußmannstraße 3d  
27570 Bremerhaven  
Germany

Tel.: +49 471 4831 2913  
E-Mail: torsten.kanzow@awi.de

## Short Cruise Report

# R/V MARIA S. MERIAN Cruise MSM 76

Reykjavik – Longyearbyen  
August 11 – September 11, 2018

Chief Scientist: Torsten Kanzow  
Captain: Ralf Schmidt

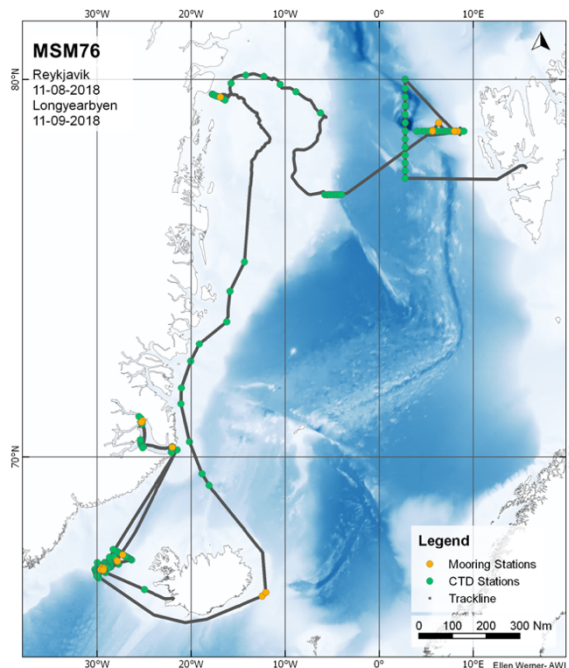


Fig. 1: Cruise track (grey lines) and CTD stations (green dots) as well as mooring stations (orange dots) during the expedition MSM 76.

## Objectives

The entrainment of ambient water into the Denmark Strait Overflow (DSO) exiting the Nordic Seas has been found to be most effective within the first 100 – 200 km downstream of the Greenland-Scotland Ridge, where warm Atlantic Water and cold East Greenland shelf water are mixed into the plume. Neither the processes and locations of intense mixing, nor the pathways of dense water on the Greenland shelf have been well-captured by observations so far. During the expedition we (1) continued the monitoring of the DSO transport at the sill of Demark Strait using moorings; (2) carried out a process study in the region of intense mixing, and (3) studied the subsurface circulation of Atlantic Water on the shelf of Northeast Greenland in particular in Scoresby Sound and close to the 79°N Glacier, and (4) continued to monitoring of the circulation of Atlantic Water in the West Spitsbergen Current at the transition between the Nordic Seas and the Arctic Ocean in Fram Strait.

## Narrative

In the early afternoon of 11 August the research vessel Maria S. Merian left the port of Reykjavik to start the MSM 76 expedition "Nordic Seas Exchanges". On board there were scientists from the Alfred-Wegener-Institute for Polar and Marine Research, and from the Universities of Hamburg, Delaware (USA) and Bremen. Our work area included Denmark Strait between Iceland and Greenland, the shelf of East Greenland and Fram Strait at the transition from the Nordic Seas and the Arctic Ocean.

On 13 August we reached our work area in Denmark Strait. Six moorings were deployed near 29°30'W in the DSO plume and intense hydrographic section work was carried out along the pathway of the DSO plume within 90 nm from the sill in Denmark Strait. We also recovered and – after servicing the sensors – redeployed a mooring operated by Hamburg University at the sill of Denmark Strait, where moorings have been maintained continuously since 1996 for the monitoring of the strength of the DSO. In the evening of 20 August we left the work area after a one day-long transit across the shelf of East Greenland at the mouth of Scoresby Sound, across which we carried out a hydrographic section. We continued our voyage into Scoresby Sound, and arrived at the transition to the narrow Nordvest Fjord in the afternoon of 21 August. Surveys using echosounder and the CTD / LADCP system suggested the existence of two possible passages for the bottom intensified throughflow of Atlantic Water. In the afternoon of 22 August we deployed two moorings (one in each passage). Next morning we headed back to the mouth of Scoresby Sound, where we deployed a third mooring for the continuous observation of the Atlantic Water circulation.

After another one-day transit we returned to Denmark Strait. Here we successfully recovered two moorings deployed on the deep overflow plume one year ago. On August 25 we first failed to recover a third mooring, while later in the afternoon and during the subsequent morning all six moorings deployed during the first days of our expedition were recovered successfully. The work in Denmark Strait ended with the conduction of continuous water mass and ocean current surveys at an isolated rise located right in the flow path of the overflow plume.

On 29 August we successfully recovered two PIES, which had been deployed on the Iceland-Faroe Ridge in order to observe a possible pathway of overflow of dense water from the Nordic Seas toward the Atlantic. On 31 August we reached the shelf of Greenland and conducted occasional hydrographic measurements on our transit to the north. We reached the entry to the embayment of the 79°N Glacier on 3 September. We found the bay filled by compact sea ice, such that there was no possibility for us to move further onshore in order to recover a mooring located right at the calving front. We repeated a hydrographic survey across Windwind Trough and deployed in it, that shall observe continuously the circulation changes of the Atlantic Water for the duration of one year. Favorable sea ice condition on 5 September allowed us to conduct a survey of the strength and hydrographic structure of the East Greenland Current.

In the afternoon of 6 September we began our work on the eastern side of Fram Strait in the area of the West Spitsbergen Current. In the following days, AWI's long-term moorings were serviced during daytime and hydrographic measurements were conducted during nighttime. We succeeded in recovering three moorings that had been sampling the

strength and structure of the West Spitsbergen Current for two years. A fourth mooring at the shelf break could not be recovered. In order maintain the observatory, four moorings were re-deployed.

After completion of the mooring and hydrographic work along the 79°N section, we carried out hydrographic section along the 002°45'E meridian over a distance of 120 nautical miles to capture the part of the warm waters that recirculate within Fram Strait. On 11 September our expedition came to an end in the port of Longyearbyen.

## **Acknowledgements**

I am looking back with joy on a very successful expedition. Our time on board has been highly enjoyable owing to both the spirit and professionalism of all parts of the crew of R/V Maria S. Merian and to the impressive engagement and solidarity among the scientific participants.

## Teilnehmerliste

Name / Name	Task	Institut/Institute
1. Torsten Kanzow	Fahrtleiter / Chief Scientist	AWI
2. Stylianos Kritsotalakis	Mooring Data	UHB
3. Andreas Münchow	vessel-based data	UDEL
4. Luisa von Albedyll	CTD Watch Leader	AWI
5. Julius Lauber	CTD Watch	UHH
6. Alena Zippel	CTD Watch	AWI
7. Ali Mubashshir	CTD Watch	AWI
8. Sunke Trace-Kleeberg	CTD Watch	AWI
9. Mara Muchow	CTD Watch	UHH
10. Frederike Benz	Oxygen sampling	UHH
11. Simon Wett	Leader Oxygen sampling	UHH
12. Andreas Welsch	CTD Technology	UHH
13. Ulrich Drübbisch	Moorings	UHH
14. Cassandra Elmer	Moorings	UDEL
15. Dragonfly Leathrum-Simons	vessel-based data	UDEL
16. Matthias Monsees	Moorings	AWI
17. David Kuhlmeier	Moorings	AWI
18. Ellen Werner	Bathymetry	AWI

AWI: Alfred-Wegener-Institute  
Helmholtz Centre for Polar and Marine Research  
Klußmannstraße 3d  
27570 Bremerhaven  
Germany

UHB: Universität Bremen  
Department 1 of Physics and Electrical Engineering  
Otto-Hahn Allee, Geb. NW1  
28334 Bremen  
Germany

UHH: Universität Hamburg  
CEN Centrum für Erdsystemforschung und Nachhaltigkeit  
Institut für Meereskunde  
Bundesstr. 53  
D-20146 Hamburg  
Germany

UDEL: University of Delaware  
112A Robinson Hall  
Newark, DE 19716  
United States

## Stationslist

Cruise_StationNr_ CastNr	Device	Date(dd.mm.yy) Time (HH:mm, UTC)	Action	Latitude	Longitude	Depth [m]	max. depth CTD [m]	Depth above bottom [m]	Comments
MSM76 1-1	RO/CTD/ADCP	11.08.18 20:08	in the water	64° 34.978' N	024° 58.157' W	241,7			
MSM76 1-1	RO/CTD/ADCP	11.08.18 20:20	max. depth	64° 34.977' N	024° 58.155' W	239,2		14,8	max. depth not noted
MSM76 1-1	RO/CTD/ADCP	11.08.18 20:33	on deck	64° 34.978' N	024° 58.156' W	241			salt and oxygen sampled for calibration
MSM76 2-1	RO/CTD/ADCP	12.08.18 06:34	in the water	65° 21.080' N	029° 06.353' W	1404,2			
MSM76 2-1	RO/CTD/ADCP	12.08.18 07:05	max. depth	65° 21.082' N	029° 06.348' W	1405,6		13,7	max. depth not noted
MSM76 2-1	RO/CTD/ADCP	12.08.18 07:39	on deck	65° 21.084' N	029° 06.346' W	1403,9			salt and oxygen sampled for calibration
MSM76 3-1	RO/CTD/ADCP	12.08.18 08:17	in the water	65° 24.177' N	029° 12.438' W	1331,5			
MSM76 3-1	RO/CTD/ADCP	12.08.18 08:47	max. depth	65° 24.179' N	029° 12.436' W	1331,5	1310	15	
MSM76 3-1	RO/CTD/ADCP	12.08.18 09:16	on deck	65° 24.344' N	029° 12.254' W	1329,1			salt and oxygen sampled for calibration
MSM76 4-1	RO/CTD/ADCP	12.08.18 09:50	in the water	65° 26.079' N	029° 16.321' W	1245,1			
MSM76 4-1	RO/CTD/ADCP	12.08.18 10:18	max. depth	65° 26.085' N	029° 16.312' W	1245,3	1231	14,9	
MSM76 4-1	RO/CTD/ADCP	12.08.18 10:46	on deck	65° 26.083' N	029° 16.306' W	1244,1			salt and oxygen sampled for calibration
MSM76 5-1	RO/CTD/ADCP	12.08.18 11:26	in the water	65° 28.007' N	029° 20.158' W	1122,3			
MSM76 5-1	RO/CTD/ADCP	12.08.18 11:53	max. depth	65° 28.004' N	029° 20.138' W	1119,8	1104	19	
MSM76 5-1	RO/CTD/ADCP	12.08.18 12:20	on deck	65° 28.005' N	029° 20.137' W	1121			salt and oxygen sampled for calibration
MSM76 6-1	RO/CTD/ADCP	12.08.18 13:05	in the water	65° 29.917' N	029° 23.955' W	988,9			
MSM76 6-1	RO/CTD/ADCP	12.08.18 13:33	max. depth	65° 29.951' N	029° 24.037' W	987	909		depth above bottom not noted
MSM76 6-1	RO/CTD/ADCP	12.08.18 13:58	on deck	65° 29.945' N	029° 24.330' W	985,8			salt and oxygen sampled for calibration
MSM76 7-1	RO/CTD/ADCP	12.08.18 14:37	in the water	65° 31.822' N	029° 27.779' W	858,3			
MSM76 7-1	RO/CTD/ADCP	12.08.18 15:04	max. depth	65° 31.823' N	029° 28.340' W	852,6	822,2	36	
MSM76 7-1	RO/CTD/ADCP	12.08.18 15:27	on deck	65° 31.792' N	029° 29.094' W	847,1			salt and oxygen sampled for calibration
MSM76 8-1	RO/CTD/ADCP	12.08.18 16:51	in the water	65° 33.745' N	029° 31.658' W	700,2			χ-pods attached
MSM76 8-1	RO/CTD/ADCP	12.08.18 17:09	max. depth	65° 33.749' N	029° 32.147' W	690,7	662,3	31,6	
MSM76 8-1	RO/CTD/ADCP	12.08.18 17:30	on deck	65° 33.710' N	029° 32.958' W	677,5			salt and oxygen sampled for calibration
MSM76 9-1	MOOR	12.08.18 18:46	start	65° 27.460' N	029° 22.686' W	1111,3			
MSM76 9-1	MOOR	12.08.18 19:53	deployed	65° 27.600' N	029° 19.170' W	1145,5			DS-C-18, short-term mooring
MSM76 10-1	MOOR	12.08.18 20:40	deployed	65° 28.339' N	029° 34.712' W	936,2			DS-A-18, ADCP mooring, short-term mooring
MSM76 11-1	RO/CTD/ADCP	12.08.18 20:58	in the water	65° 28.555' N	029° 34.268' W	930,2			χ-pods attached
MSM76 11-1	RO/CTD/ADCP	12.08.18 21:23	max. depth	65° 28.655' N	029° 34.656' W	918,6	896	17	
MSM76 11-1	RO/CTD/ADCP	12.08.18 21:49	on deck	65° 28.850' N	029° 35.502' W	901,7			salt and oxygen sampled for calibration
MSM76 12-1	MOOR	12.08.18 22:15	start	65° 28.579' N	029° 35.391' W	914,2			
MSM76 12-1	MOOR	12.08.18 22:44	deployed	65° 28.537' N	029° 34.205' W	929,5			DS-E-18, short-term mooring
MSM76 13-1	RO/CTD/ADCP	13.08.18 00:25	in the water	65° 35.707' N	029° 35.481' W	434			χ-pods attached
MSM76 13-1	RO/CTD/ADCP	13.08.18 00:37	max. depth	65° 35.705' N	029° 35.482' W	434,8	425	13,7	
MSM76 13-1	RO/CTD/ADCP	13.08.18 00:53	on deck	65° 35.707' N	029° 35.482' W	434,2			salt and oxygen sampled for calibration
MSM76 14-1	RO/CTD/ADCP	13.08.18 01:30	in the water	65° 37.621' N	029° 39.400' W	362,4			χ-pods attached
MSM76 14-1	RO/CTD/ADCP	13.08.18 01:41	max. depth	65° 37.620' N	029° 39.403' W	360,4	353	12,6	
MSM76 14-1	RO/CTD/ADCP	13.08.18 01:55	on deck	65° 37.620' N	029° 39.399' W	362,2			salt sampled for calibration
MSM76 15-1	RO/CTD/ADCP	13.08.18 02:36	in the water	65° 39.554' N	029° 43.256' W	338,4			χ-pods attached
MSM76 15-1	RO/CTD/ADCP	13.08.18 02:46	max. depth	65° 39.555' N	029° 43.258' W	339,5	320	15,7	
MSM76 15-1	RO/CTD/ADCP	13.08.18 02:59	on deck	65° 39.554' N	029° 43.259' W	338,7			salt and oxygen sampled for calibration
MSM76 16-1	RO/CTD/ADCP	13.08.18 05:11	in the water	65° 24.164' N	029° 12.471' W	1325			χ-pods attached
MSM76 16-1	RO/CTD/ADCP	13.08.18 05:40	max. depth	65° 24.162' N	029° 12.465' W	1324,2	1309,8	20,2	
MSM76 16-1	RO/CTD/ADCP	13.08.18 06:11	on deck	65° 24.164' N	029° 12.470' W	1324,6			salt sampled for calibration
MSM76 17-1	RO/CTD/ADCP	13.08.18 06:39	in the water	65° 26.083' N	029° 16.311' W	1244,4			χ-pods attached
MSM76 17-1	RO/CTD/ADCP	13.08.18 07:06	max. depth	65° 26.084' N	029° 16.308' W	1246,5	1231,5	13,5	
MSM76 17-1	RO/CTD/ADCP	13.08.18 07:38	on deck	65° 26.082' N	029° 16.308' W	1244,3			salt and oxygen sampled for calibration
MSM76 18-1	RO/CTD/ADCP	13.08.18 08:08	in the water	65° 28.893' N	029° 17.439' W	1130,4			χ-pods attached
MSM76 18-1	RO/CTD/ADCP	13.08.18 08:35	max. depth	65° 28.892' N	029° 17.437' W	1128		15	max. depth not noted
MSM76 18-1	RO/CTD/ADCP	13.08.18 08:57	on deck	65° 28.890' N	029° 17.436' W	1129,5			
MSM76 19-1	RO/CTD/ADCP	13.08.18 09:35	in the water	65° 29.925' N	029° 23.973' W	988,1			χ-pods attached
MSM76 19-1	RO/CTD/ADCP	13.08.18 09:59	max. depth	65° 29.936' N	029° 23.976' W	987,9	974	18,2	
MSM76 19-1	RO/CTD/ADCP	13.08.18 10:26	on deck	65° 29.935' N	029° 23.976' W	988,3			salt and oxygen sampled for calibration
MSM76 20-1	RO/CTD/ADCP	13.08.18 11:16	in the water	65° 33.776' N	029° 31.666' W	697			χ-pods attached
MSM76 20-1	RO/CTD/ADCP	13.08.18 11:36	max. depth	65° 33.773' N	029° 31.664' W	696,4		15	max. depth not noted
MSM76 20-1	RO/CTD/ADCP	13.08.18 11:51	on deck	65° 33.773' N	029° 31.664' W	696,7			
MSM76 20-2	MOOR	13.08.18 12:10	start	65° 33.770' N	029° 32.415' W	682,8			
MSM76 20-2	MOOR	13.08.18 12:34	deployed	65° 33.772' N	029° 31.676' W	697,4			DS-B-18, short-term mooring
MSM76 21-1	MOOR	13.08.18 12:58	deployed	65° 34.274' N	029° 30.411' W	692,5			DS-F-18, ADCP mooring, short-term mooring
MSM76 22-1	MOOR	13.08.18 14:40	start	65° 32.601' N	029° 18.630' W	971			
MSM76 22-1	MOOR	13.08.18 15:05	deployed	65° 32.602' N	029° 17.798' W	971,5			DS-D-18, short-term mooring
MSM76 23-1	VmADCP	13.08.18 17:03	profile start	65° 42.458' N	028° 33.660' W	958			true course= 352°
MSM76 23-1	VmADCP	13.08.18 18:51	alter course	66° 02.122' N	028° 39.991' W	383,8			true course= 049°
MSM76 23-1	VmADCP	13.08.18 19:48	alter course	66° 08.151' N	028° 20.896' W	435,5			true course= 148°
MSM76 23-1	VmADCP	13.08.18 20:54	continue profile	65° 58.734' N	028° 06.320' W	474			
MSM76 23-1	VmADCP	13.08.18 21:35	continue profile	65° 58.631' N	028° 06.350' W	476,1			
MSM76 23-1	VmADCP	13.08.18 21:59	continue profile	65° 56.617' N	028° 02.962' W	526,5			
MSM76 23-1	VmADCP	13.08.18 22:37	continue profile	65° 56.487' N	028° 02.983' W	528,3			
MSM76 23-1	VmADCP	13.08.18 22:58	continue profile	65° 54.593' N	027° 59.746' W	573,9			
MSM76 23-1	VmADCP	13.08.18 23:36	continue profile	65° 54.428' N	027° 59.693' W	590,8			
MSM76 23-1	VmADCP	14.08.18 00:00	continue profile	65° 52.507' N	027° 56.362' W	622,9			
MSM76 23-1	VmADCP	14.08.18 00:41	continue profile	65° 52.397' N	027° 56.350' W	631,8			
MSM76 23-1	VmADCP	14.08.18 01:02	continue profile	65° 50.347' N	027° 53.050' W	691			
MSM76 23-1	VmADCP	14.08.18 01:51	continue profile	65° 50.260' N	027° 53.227' W	691,6			
MSM76 23-1	VmADCP	14.08.18 02:14	continue profile	65° 48.270' N	027° 49.704' W	740,2			
MSM76 23-1	VmADCP	14.08.18 03:01	continue profile	65° 48.207' N	027° 49.781' W				no depth information
MSM76 23-1	VmADCP	14.08.18 03:25	continue profile	65° 46.073' N	027° 46.277' W	7307			
MSM76 23-1	VmADCP	14.08.18 04:12	continue profile	65° 46.165' N	027° 46.325' W	7314			
MSM76 23-1	VmADCP	14.08.18 07:31	continue profile	65° 53.984' N	026° 20.015' W	2806			
MSM76 23-1	VmADCP	14.08.18 07:57	continue profile	65° 53.991' N	026° 20.022' W	2814			
MSM76 23-1	VmADCP	14.08.18 08:33	continue profile	65° 56.532' N	026° 30.639' W	2829			
MSM76 23-1	VmADCP	14.08.18 09:06	continue profile	65° 56.517' N	026° 30.623' W	2840			
MSM76 23-1	VmADCP	14.08.18 09:33	continue profile	65° 57.781' N	026° 36.028' W	2829			
MSM76 23-1	VmADCP	14.08.18 10:04	continue profile	65° 57.973' N	026° 36.337' W	2752			
MSM76 23-1	VmADCP	14.08.18 10:25	continue profile	65° 59.038' N	026° 41.375' W	2869			
MSM76 23-1	VmADCP	14.08.18 10:54	continue profile	65° 59.221' N	026° 41.301' W	2894			
MSM76 23-1	VmADCP	14.08.18 11:25	continue profile	66° 00.317' N	026° 46.626' W	3856			
MSM76 23-1	VmADCP	14.08.18 11:54	continue profile	66° 00.670' N	026° 46.421' W	4007			
MSM76 23-1	VmADCP	14.08.18 12:23	continue profile	66° 01.567' N	026° 51.795' W	5159			
MSM76 23-1	VmADCP	14.08.18 13:06	continue profile	66° 02.056' N	026° 51.227' W	5255			
MSM76 23-1	VmADCP	14.08.18 13:40	continue profile	66° 02.761' N	026° 57.178' W	5904			
MSM76 23-1	VmADCP	14.08.18 14:20	continue profile	66° 03.205' N	026° 56.492' W	5922			
MSM76 23-1	VmADCP	14.08.18 14:46	continue profile	66° 04.022' N	027° 02.535' W	6412			
MSM76 23-1	VmADCP	14.08.18 15:26	continue profile	66° 04.406' N	027° 01.913' W	6424			
MSM76 23-1	VmADCP	14.08.18 15:59	continue profile	66° 05.280' N	027° 07.657' W	6407			
MSM76 23-1	VmADCP	14.08.18 16:39	continue profile	66° 05.280' N	027° 07.646' W	6405			
MSM76 23-1	VmADCP	14.08.18 17:10	continue profile	66° 06.540' N	027° 13.189' W	6103			
MSM76 23-1	VmADCP	14.08.18 19:14	continue profile	66° 07.752' N	027° 18.433' W	5238			
MSM76 23-1	VmADCP	14.08.18 19:41	continue profile	66° 09.035' N	027° 23.840' W	4858			
MSM76 23-1	VmADCP	14.08.18 20:17	continue profile	66° 08.949' N	027° 24.044' W	4842			
MSM76 23-1	VmADCP	14.08.18 20:41	continue profile	66° 10.244' N	027° 29.053' W	4820			

MSM76 23-1	VmADCP	14.08.18 21:15	continue profile	66° 10.242' N	027° 29.053' W	4826			
MSM76 23-1	VmADCP	14.08.18 21:40	continue profile	66° 11.547' N	027° 34.522' W	4844			
MSM76 23-1	VmADCP	14.08.18 22:19	continue profile	66° 11.551' N	027° 34.526' W	4848			
MSM76 23-1	VmADCP	14.08.18 22:45	continue profile	66° 12.828' N	027° 39.822' W	4842			
MSM76 23-1	VmADCP	14.08.18 23:27	continue profile	66° 12.811' N	027° 39.813' W	4844			
MSM76 23-1	VmADCP	14.08.18 23:55	continue profile	66° 14.071' N	027° 45.244' W	4745			
MSM76 23-1	VmADCP	15.08.18 00:35	continue profile	66° 14.068' N	027° 45.241' W	4745			
MSM76 23-1	VmADCP	15.08.18 01:04	continue profile	66° 15.311' N	027° 50.537' W	4491			
MSM76 23-1	VmADCP	15.08.18 02:13	continue profile	66° 15.300' N	027° 50.423' W	4586			
MSM76 23-1	VmADCP	15.08.18 02:44	continue profile	66° 16.572' N	027° 55.958' W	4303			
MSM76 23-1	VmADCP	15.08.18 03:16	continue profile	66° 16.572' N	027° 55.944' W	4299			
MSM76 23-1	VmADCP	15.08.18 03:58	continue profile	66° 19.067' N	028° 06.702' W	3380			
MSM76 23-1	VmADCP	15.08.18 04:31	continue profile	66° 19.151' N	028° 06.525' W	3427			
MSM76 23-1	VmADCP	15.08.18 05:06	profile end	66° 21.591' N	028° 17.472' W	3296			
MSM76 24-1	RO/CTD/ADCP	13.08.18 21:03	in the water	65° 58.754' N	028° 06.266' W	4746			x-pods attached
MSM76 24-1	RO/CTD/ADCP	13.08.18 21:17	max. depth	65° 58.762' N	028° 06.242' W	4736	460	18,4	
MSM76 24-1	RO/CTD/ADCP	13.08.18 21:34	on deck	65° 58.640' N	028° 06.344' W	4753			salt and oxygen sampled for calibration
MSM76 25-1	RO/CTD/ADCP	13.08.18 22:08	in the water	65° 56.621' N	028° 02.981' W	5263			x-pods attached
MSM76 25-1	RO/CTD/ADCP	13.08.18 22:24	max. depth	65° 56.574' N	028° 02.983' W	5272		16,1	max. depth not noted
MSM76 25-1	RO/CTD/ADCP	13.08.18 22:36	on deck	65° 56.493' N	028° 02.982' W	5332			
MSM76 26-1	RO/CTD/ADCP	13.08.18 23:00	in the water	65° 54.589' N	027° 59.725' W	5733			x-pods attached
MSM76 26-1	RO/CTD/ADCP	13.08.18 23:17	max. depth	65° 54.512' N	027° 59.663' W	5751	570	15,8	
MSM76 26-1	RO/CTD/ADCP	13.08.18 23:35	max. depth	65° 54.430' N	027° 59.692' W	5772			salt and oxygen sampled for calibration
MSM76 27-1	RO/CTD/ADCP	14.08.18 00:02	in the water	65° 52.500' N	027° 56.365' W	6238			x-pods attached
MSM76 27-1	RO/CTD/ADCP	14.08.18 00:19	max. depth	65° 52.436' N	027° 56.358' W	6299	615	13	
MSM76 27-1	RO/CTD/ADCP	14.08.18 00:37	on deck	65° 52.398' N	027° 56.352' W	6301			salt sampled for calibration
MSM76 28-1	RO/CTD/ADCP	14.08.18 01:10	in the water	65° 50.343' N	027° 53.080' W	6928			x-pods attached
MSM76 28-1	RO/CTD/ADCP	14.08.18 01:30	max. depth	65° 50.329' N	027° 53.108' W	6918	669	17,5	
MSM76 28-1	RO/CTD/ADCP	14.08.18 01:49	on deck	65° 50.270' N	027° 53.251' W	6917			salt and oxygen sampled for calibration
MSM76 29-1	RO/CTD/ADCP	14.08.18 02:19	in the water	65° 48.260' N	027° 49.721' W	7398			x-pods attached
MSM76 29-1	RO/CTD/ADCP	14.08.18 02:37	max. depth	65° 48.267' N	027° 49.696' W	7401	714	22,3	
MSM76 29-1	RO/CTD/ADCP	14.08.18 02:58	on deck	65° 48.217' N	027° 49.830' W	7381			salt sampled for calibration
MSM76 30-1	RO/CTD/ADCP	14.08.18 03:33	in the water	65° 46.060' N	027° 46.322' W	7330			x-pods attached
MSM76 30-1	RO/CTD/ADCP	14.08.18 03:51	max. depth	65° 46.108' N	027° 46.490' W	7339	718	20	
MSM76 30-1	RO/CTD/ADCP	14.08.18 04:11	on deck	65° 46.165' N	027° 46.327' W	7317			salt and oxygen sampled for calibration
MSM76 31-1	RO/CTD/ADCP	14.08.18 07:33	in the water	65° 53.987' N	026° 20.021' W	2818			x-pods attached
MSM76 31-1	RO/CTD/ADCP	14.08.18 07:44	max. depth	65° 53.994' N	026° 20.026' W	2814	271,3	14,8	
MSM76 31-1	RO/CTD/ADCP	14.08.18 07:56	on deck	65° 53.992' N	026° 20.022' W	2815			salt sampled for calibration
MSM76 32-1	RO/CTD/ADCP	14.08.18 08:39	in the water	65° 56.516' N	026° 30.622' W	2829			x-pods attached
MSM76 32-1	RO/CTD/ADCP	14.08.18 08:52	max. depth	65° 56.516' N	026° 30.624' W	2826	273	15,1	
MSM76 32-1	RO/CTD/ADCP	14.08.18 09:05	on deck	65° 56.517' N	026° 30.620' W	2834			salt and oxygen sampled for calibration
MSM76 33-1	RO/CTD/ADCP	14.08.18 09:36	in the water	65° 57.773' N	026° 36.016' W	2817			x-pods attached
MSM76 33-1	RO/CTD/ADCP	14.08.18 09:47	max. depth	65° 57.800' N	026° 36.060' W	2811	296,7	14,8	
MSM76 33-1	RO/CTD/ADCP	14.08.18 09:59	on deck	65° 57.855' N	026° 36.140' W	2747			salt sampled for calibration
MSM76 34-1	RO/CTD/ADCP	14.08.18 10:29	in the water	65° 59.034' N	026° 41.355' W	2880			x-pods attached
MSM76 34-1	RO/CTD/ADCP	14.08.18 10:40	max. depth	65° 59.087' N	026° 41.361' W	2919	277	14,1	
MSM76 34-1	RO/CTD/ADCP	14.08.18 10:54	on deck	65° 59.221' N	026° 41.301' W	2894			salt and oxygen sampled for calibration
MSM76 35-1	RO/CTD/ADCP	14.08.18 11:23	in the water	66° 00.308' N	026° 46.629' W	3856			x-pods attached
MSM76 35-1	RO/CTD/ADCP	14.08.18 11:36	max. depth	66° 00.426' N	026° 46.570' W	3887	383	15,3	
MSM76 35-1	RO/CTD/ADCP	14.08.18 11:53	on deck	66° 00.665' N	026° 46.428' W	4005			salt and oxygen sampled for calibration
MSM76 36-1	RO/CTD/ADCP	14.08.18 12:30	in the water	66° 01.573' N	026° 51.794' W	5155			x-pods attached
MSM76 36-1	RO/CTD/ADCP	14.08.18 12:44	max. depth	66° 01.753' N	026° 51.696' W	5181	501	21	
MSM76 36-1	RO/CTD/ADCP	14.08.18 13:01	on deck	66° 02.054' N	026° 51.241' W	5267			salt and oxygen sampled for calibration
MSM76 37-1	RO/CTD/ADCP	14.08.18 13:42	in the water	66° 02.761' N	026° 57.184' W	5907			x-pods attached
MSM76 37-1	RO/CTD/ADCP	14.08.18 13:59	max. depth	66° 02.945' N	026° 56.896' W	5931	576	17,9	
MSM76 37-1	RO/CTD/ADCP	14.08.18 14:18	on deck	66° 03.198' N	026° 56.501' W	5929			salt sampled for calibration
MSM76 38-1	RO/CTD/ADCP	14.08.18 14:49	in the water	66° 04.020' N	027° 02.510' W	6410			x-pods attached
MSM76 38-1	RO/CTD/ADCP	14.08.18 15:05	max. depth	66° 04.174' N	027° 02.269' W	6425	621,6	18,6	
MSM76 38-1	RO/CTD/ADCP	14.08.18 15:25	on deck	66° 04.395' N	027° 01.927' W	6428			salt and oxygen sampled for calibration
MSM76 39-1	RO/CTD/ADCP	14.08.18 16:02	in the water	66° 05.279' N	027° 07.656' W	6414			x-pods attached
MSM76 39-1	RO/CTD/ADCP	14.08.18 16:20	max. depth	66° 05.278' N	027° 07.656' W	6419	624,6	14,6	
MSM76 39-1	RO/CTD/ADCP	14.08.18 16:37	on deck	66° 05.280' N	027° 07.652' W	6427			salt sampled for calibration
MSM76 40-1	RO/CTD/ADCP	14.08.18 17:11	in the water	66° 06.541' N	027° 13.190' W	6103			x-pods attached
MSM76 40-1	RO/CTD/ADCP	14.08.18 17:27	max. depth	66° 06.538' N	027° 13.184' W	6034	581,1	29,1	
MSM76 40-1	RO/CTD/ADCP	14.08.18 17:46	on deck	66° 06.480' N	027° 13.279' W	6064			salt and oxygen sampled for calibration
MSM76 41-1	RO/CTD/ADCP	14.08.18 18:37	in the water	66° 07.785' N	027° 18.454' W	5201			x-pods attached
MSM76 41-1	RO/CTD/ADCP	14.08.18 18:52	max. depth	66° 07.782' N	027° 18.473' W	5207	502,7	23,5	
MSM76 41-1	RO/CTD/ADCP	14.08.18 19:09	on deck	66° 07.739' N	027° 18.597' W	5229			salt and oxygen sampled for calibration
MSM76 42-1	RO/CTD/ADCP	14.08.18 19:44	in the water	66° 09.034' N	027° 23.845' W	4846			x-pods attached
MSM76 42-1	RO/CTD/ADCP	14.08.18 19:58	max. depth	66° 09.034' N	027° 23.851' W	4839	471,3		depth above bottom not noted
MSM76 42-1	RO/CTD/ADCP	14.08.18 20:16	on deck	66° 08.953' N	027° 24.037' W	4840			salt and oxygen sampled for calibration
MSM76 43-1	RO/CTD/ADCP	14.08.18 20:44	in the water	66° 10.241' N	027° 29.049' W	4812			x-pods attached
MSM76 43-1	RO/CTD/ADCP	14.08.18 20:59	max. depth	66° 10.242' N	027° 29.048' W	4816	467	15,9	
MSM76 43-1	RO/CTD/ADCP	14.08.18 21:14	on deck	66° 10.243' N	027° 29.052' W	4829			salt sampled for calibration
MSM76 44-1	RO/CTD/ADCP	14.08.18 21:45	in the water	66° 11.551' N	027° 34.527' W	4843			x-pods attached
MSM76 44-1	RO/CTD/ADCP	14.08.18 22:00	max. depth	66° 11.552' N	027° 34.525' W	4845	469,8	14,7	
MSM76 44-1	RO/CTD/ADCP	14.08.18 22:18	on deck	66° 11.550' N	027° 34.525' W	4839			salt and oxygen sampled for calibration
MSM76 45-1	RO/CTD/ADCP	14.08.18 22:57	in the water	66° 12.793' N	027° 39.820' W	4844			x-pods attached
MSM76 45-1	RO/CTD/ADCP	14.08.18 23:12	max. depth	66° 12.810' N	027° 39.813' W	4843	471,3	14,9	
MSM76 45-1	RO/CTD/ADCP	14.08.18 23:27	on deck	66° 12.811' N	027° 39.813' W	4849			salt sampled for calibration
MSM76 46-1	RO/CTD/ADCP	14.08.18 23:58	in the water	66° 14.068' N	027° 45.240' W	4748			x-pods attached
MSM76 46-1	RO/CTD/ADCP	15.08.18 00:12	max. depth	66° 14.067' N	027° 45.243' W	4752	462	15,2	
MSM76 46-1	RO/CTD/ADCP	15.08.18 00:29	on deck	66° 14.069' N	027° 45.242' W	4739			salt and oxygen sampled for calibration
MSM76 47-1	RO/CTD/ADCP	15.08.18 01:42	in the water	66° 15.297' N	027° 50.421' W	4589			x-pods attached
MSM76 47-1	RO/CTD/ADCP	15.08.18 01:55	max. depth	66° 15.300' N	027° 50.422' W	4589	452	5,9	
MSM76 47-1	RO/CTD/ADCP	15.08.18 02:11	on deck	66° 15.299' N	027° 50.427' W	4588			salt sampled for calibration
MSM76 48-1	RO/CTD/ADCP	15.08.18 02:45	in the water	66° 16.570' N	027° 55.965' W	4302			x-pods attached
MSM76 48-1	RO/CTD/ADCP	15.08.18 02:59	max. depth	66° 16.570' N	027° 55.955' W	4291	418	15,9	
MSM76 48-1	RO/CTD/ADCP	15.08.18 03:13	on deck	66° 16.572' N	027° 55.957' W	4297			salt and oxygen sampled for calibration
MSM76 49-1	RO/CTD/ADCP	15.08.18 04:03	in the water	66° 19.064' N	028° 06.702' W	3379			x-pods attached
MSM76 49-1	RO/CTD/ADCP	15.08.18 04:14	max. depth	66° 19.068' N	028° 06.698' W	3382	325,3	13,6	
MSM76 49-1	RO/CTD/ADCP	15.08.18 04:28	on deck	66° 19.066' N	028° 06.697' W	3382			salt sampled for calibration
MSM76 50-1	RO/CTD/ADCP	15.08.18 05:09	in the water	66° 21.588' N	028° 17.478' W	3295			x-pods attached
MSM76 50-1	RO/CTD/ADCP	15.08.18 05:19	max. depth	66° 21.590' N	028° 17.472' W	3296	320,5	12,4	
MSM76 50-1	RO/CTD/ADCP	15.08.18 05:34	on deck	66° 21.589' N	028° 17.471' W	3285			salt and oxygen sampled for calibration
MSM76 51-1	MOOR	15.08.18 08:42	released	66° 07.018' N	027° 17.431' W	5650			
MSM76 51-1	MOOR	15.08.18 08:45	at surface	66° 07.005' N	027° 17.468' W	5650			
MSM76 51-1	MOOR	15.08.18 08:59	recovered	66° 07.276' N	027° 16.852' W	5650			DS-2-17
MSM76 52-1	MOOR	15.08.18 11:24	begin dredging	66° 03.358' N	026° 59.327' W	6231			
MSM76 52-1	MOOR	15.08.18 14:38	course 050°, begin dredging	66° 02.962' N	027° 00.334' W	6148			
MSM76 52-1	MOOR	15.08.18 15:23	begin dredging, course 206°	66° 03.132' N	026° 59.743' W	6140			
MSM76 52-1	MOOR	15.08.18 16:19	begin dredging, course 055°	66° 02.802' N	027° 00.093' W	6138			
MSM76 52-1	MOOR	15.08.18 17:32	all on deck	66° 03.048' N	026° 59.206' W	6061			dredging of DS 23-17 unsuccessful
MSM76 53-1	RO/CTD/ADCP	15.08.18 17:37	in the water	66° 03.049' N	026° 59.204' W	6042			x-pods attached, temperature loggers were attached for calibration
MSM76 53-1	RO/CTD/ADCP	15.08.18 18:07							

MSM76 54-1	MOOR	15.08.18 19:40	deployed	66° 07.294' N	027° 16.729' W	5656			DS2-18, ADCP mooring
MSM76 55-1	RO/CTD/ADCP	15.08.18 21:53	in the water	66° 02.696' N	028° 12.144' W	4646			x-pods attached
MSM76 55-1	RO/CTD/ADCP	15.08.18 22:09	max. depth	66° 02.599' N	028° 12.166' W	4660	451	15	
MSM76 55-1	RO/CTD/ADCP	15.08.18 22:23	on deck	66° 02.457' N	028° 12.199' W	4656			salt sampled for calibration
MSM76 56-1	RO/CTD/ADCP	15.08.18 23:19	in the water	65° 58.743' N	028° 06.223' W	4700			x-pods attached
MSM76 56-1	RO/CTD/ADCP	15.08.18 23:34	max. depth	65° 58.693' N	028° 06.152' W	4740	463,3	15,7	
MSM76 56-1	RO/CTD/ADCP	15.08.18 23:52	on deck	65° 58.560' N	028° 05.856' W	4803			salt and oxygen sampled for calibration
MSM76 57-1	RO/CTD/ADCP	16.08.18 00:28	in the water	65° 56.635' N	028° 02.916' W	5221			x-pods attached
MSM76 57-1	RO/CTD/ADCP	16.08.18 00:41	max. depth	65° 56.570' N	028° 02.770' W	5230	510	15,7	
MSM76 57-1	RO/CTD/ADCP	16.08.18 00:57	on deck	65° 56.432' N	028° 02.485' W	5254			
MSM76 58-1	RO/CTD/ADCP	16.08.18 01:30	in the water	65° 54.548' N	027° 59.627' W	5719			x-pods attached
MSM76 58-1	RO/CTD/ADCP	16.08.18 01:44	max. depth	65° 54.455' N	027° 59.402' W	5767	563	14,6	
MSM76 58-1	RO/CTD/ADCP	16.08.18 02:02	on deck	65° 54.301' N	027° 59.082' W	5817			salt and oxygen sampled for calibration
MSM76 59-1	RO/CTD/ADCP	16.08.18 02:41	in the water	65° 52.442' N	027° 56.359' W	6197			x-pods attached
MSM76 59-1	RO/CTD/ADCP	16.08.18 02:56	max. depth	65° 52.351' N	027° 56.170' W	6301		17,1	max. depth not noted
MSM76 59-1	RO/CTD/ADCP	16.08.18 03:13	on deck	65° 52.154' N	027° 55.760' W	6346			
MSM76 60-1	RO/CTD/ADCP	16.08.18 03:44	in the water	65° 50.341' N	027° 53.100' W	6829			x-pods attached
MSM76 60-1	RO/CTD/ADCP	16.08.18 04:00	max. depth	65° 50.241' N	027° 52.876' W	6851	674	17,9	
MSM76 60-1	RO/CTD/ADCP	16.08.18 04:19	on deck	65° 50.094' N	027° 52.878' W	6894			salt and oxygen sampled for calibration
MSM76 61-1	RO/CTD/ADCP	16.08.18 04:46	in the water	65° 48.215' N	027° 49.785' W	7324			x-pods attached
MSM76 61-1	RO/CTD/ADCP	16.08.18 05:05	max. depth	65° 48.099' N	027° 49.855' W	7340	723,9	15,6	
MSM76 61-1	RO/CTD/ADCP	16.08.18 05:26	on deck	65° 47.963' N	027° 49.944' W	7342			salt sampled for calibration
MSM76 62-1	RO/CTD/ADCP	16.08.18 05:55	in the water	65° 46.095' N	027° 46.506' W	7344			x-pods attached
MSM76 62-1	RO/CTD/ADCP	16.08.18 06:12	max. depth	65° 45.984' N	027° 46.550' W	7354	726,6		depth above bottom not noted
MSM76 62-1	RO/CTD/ADCP	16.08.18 06:31	on deck	65° 45.851' N	027° 46.602' W	7376			salt and oxygen sampled for calibration
MSM76 63-1	RO/CTD/ADCP	16.08.18 07:10	in the water	65° 43.113' N	027° 43.325' W	6706			x-pods attached
MSM76 63-1	RO/CTD/ADCP	16.08.18 07:26	max. depth	65° 43.114' N	027° 43.323' W	6701	662,5	15	
MSM76 63-1	RO/CTD/ADCP	16.08.18 07:45	on deck	65° 43.114' N	027° 43.323' W	6694			salt sampled for calibration
MSM76 64-1	RO/CTD/ADCP	16.08.18 09:56	in the water	65° 35.842' N	028° 32.501' W	10274			x-pods attached
MSM76 64-1	RO/CTD/ADCP	16.08.18 10:21	max. depth	65° 35.843' N	028° 32.499' W	10291	1017	13	
MSM76 64-1	RO/CTD/ADCP	16.08.18 10:49	on deck	65° 35.843' N	028° 32.501' W	10280			salt and oxygen sampled for calibration
MSM76 65-1	RO/CTD/ADCP	16.08.18 11:17	in the water	65° 38.676' N	028° 33.024' W	10552			x-pods attached
MSM76 65-1	RO/CTD/ADCP	16.08.18 11:42	max. depth	65° 38.676' N	028° 33.023' W	10540	1041	15,3	
MSM76 65-1	RO/CTD/ADCP	16.08.18 12:08	on deck	65° 38.677' N	028° 33.026' W	10555			salt sampled for calibration
MSM76 66-1	RO/CTD/ADCP	16.08.18 12:42	in the water	65° 41.109' N	028° 33.803' W	9973			x-pods attached
MSM76 66-1	RO/CTD/ADCP	16.08.18 13:04	max. depth	65° 41.110' N	028° 33.802' W	9990	981	19	
MSM76 66-1	RO/CTD/ADCP	16.08.18 13:27	on deck	65° 41.110' N	028° 33.802' W	9974			salt and oxygen sampled for calibration
MSM76 67-1	RO/CTD/ADCP	16.08.18 13:59	in the water	65° 43.628' N	028° 34.771' W	9191			x-pods attached
MSM76 67-1	RO/CTD/ADCP	16.08.18 14:18	max. depth	65° 43.629' N	028° 34.769' W	9184	903	16,8	
MSM76 67-1	RO/CTD/ADCP	16.08.18 14:42	on deck	65° 43.628' N	028° 34.770' W	9177			
MSM76 68-1	RO/CTD/ADCP	16.08.18 15:11	in the water	65° 46.095' N	028° 35.621' W	8127			x-pods attached
MSM76 68-1	RO/CTD/ADCP	16.08.18 15:30	max. depth	65° 46.099' N	028° 35.620' W	8118	800	18,1	
MSM76 68-1	RO/CTD/ADCP	16.08.18 15:49	on deck	65° 45.987' N	028° 35.741' W	8208			salt and oxygen sampled for calibration
MSM76 69-1	RO/CTD/ADCP	16.08.18 16:26	in the water	65° 48.558' N	028° 36.516' W	6611			x-pods attached
MSM76 69-1	RO/CTD/ADCP	16.08.18 16:43	max. depth	65° 48.496' N	028° 36.608' W	6644	653,7	16,3	
MSM76 69-1	RO/CTD/ADCP	16.08.18 17:01	on deck	65° 48.391' N	028° 36.757' W	6693			
MSM76 70-1	RO/CTD/ADCP	16.08.18 17:32	in the water	65° 51.035' N	028° 37.340' W	5684			x-pods attached
MSM76 70-1	RO/CTD/ADCP	16.08.18 17:46	max. depth	65° 50.994' N	028° 37.414' W	5706	558,7	15,8	
MSM76 70-1	RO/CTD/ADCP	16.08.18 18:04	max. depth	65° 50.852' N	028° 37.653' W	5712			salt and oxygen sampled for calibration
MSM76 71-1	RO/CTD/ADCP	16.08.18 18:36	in the water	65° 53.518' N	028° 38.197' W	5064			x-pods attached
MSM76 71-1	RO/CTD/ADCP	16.08.18 18:48	max. depth	65° 53.480' N	028° 38.272' W	5061	490,1	15,6	
MSM76 71-1	RO/CTD/ADCP	16.08.18 19:04	on deck	65° 53.338' N	028° 38.545' W	5104			
MSM76 72-1	RO/CTD/ADCP	16.08.18 19:37	in the water	65° 55.987' N	028° 39.066' W	4514			x-pods attached
MSM76 72-1	RO/CTD/ADCP	16.08.18 19:51	max. depth	65° 55.938' N	028° 39.166' W	4519	439	16,6	
MSM76 72-1	RO/CTD/ADCP	16.08.18 20:05	on deck	65° 55.884' N	028° 39.507' W	4577			salt and oxygen sampled for calibration
MSM76 73-1	RO/CTD/ADCP	16.08.18 20:51	in the water	66° 01.178' N	028° 40.803' W	3829			x-pods attached
MSM76 73-1	RO/CTD/ADCP	16.08.18 21:04	max. depth	66° 01.144' N	028° 40.929' W	3832	367	14,5	
MSM76 73-1	RO/CTD/ADCP	16.08.18 21:18	on deck	66° 01.058' N	028° 41.257' W	3843			
MSM76 74-1	RO/CTD/ADCP	16.08.18 23:23	in the water	65° 47.455' N	029° 11.826' W	4033			x-pods attached
MSM76 74-1	RO/CTD/ADCP	16.08.18 23:37	max. depth	65° 47.375' N	029° 12.112' W	3964	396	16,4	
MSM76 74-1	RO/CTD/ADCP	16.08.18 23:54	on deck	65° 47.252' N	029° 12.577' W	4183			salt and oxygen sampled for calibration
MSM76 75-1	RO/CTD/ADCP	17.08.18 00:28	in the water	65° 45.354' N	029° 08.682' W	5873			x-pods attached
MSM76 75-1	RO/CTD/ADCP	17.08.18 00:44	max. depth	65° 45.294' N	029° 08.866' W	5863	574	17,2	
MSM76 75-1	RO/CTD/ADCP	17.08.18 01:03	on deck	65° 45.204' N	029° 09.144' W	5884			
MSM76 76-1	RO/CTD/ADCP	17.08.18 01:35	in the water	65° 43.213' N	029° 05.755' W	7466			x-pods attached
MSM76 76-1	RO/CTD/ADCP	17.08.18 01:53	max. depth	65° 43.161' N	029° 05.887' W	7463	734	18,2	
MSM76 76-1	RO/CTD/ADCP	17.08.18 02:15	on deck	65° 43.069' N	029° 06.119' W	7466			salt and oxygen sampled for calibration
MSM76 77-1	RO/CTD/ADCP	17.08.18 02:46	in the water	65° 40.809' N	029° 03.395' W	8543			x-pods attached
MSM76 77-1	RO/CTD/ADCP	17.08.18 03:05	max. depth	65° 40.810' N	029° 03.403' W	8539	844	16,5	
MSM76 77-1	RO/CTD/ADCP	17.08.18 03:28	on deck	65° 40.810' N	029° 03.397' W	8555			
MSM76 78-1	RO/CTD/ADCP	17.08.18 04:04	in the water	65° 38.568' N	029° 00.523' W	9505			x-pods attached
MSM76 78-1	RO/CTD/ADCP	17.08.18 04:24	max. depth	65° 38.569' N	029° 00.524' W	9504	940	17,5	
MSM76 78-1	RO/CTD/ADCP	17.08.18 04:49	on deck	65° 38.567' N	029° 00.523' W	9501			salt and oxygen sampled for calibration
MSM76 79-1	RO/CTD/ADCP	17.08.18 05:14	in the water	65° 36.387' N	028° 57.795' W	10396			x-pods attached
MSM76 79-1	RO/CTD/ADCP	17.08.18 05:39	max. depth	65° 36.387' N	028° 57.793' W	10442	1030	17,7	
MSM76 79-1	RO/CTD/ADCP	17.08.18 06:03	on deck	65° 36.387' N	028° 57.796' W	10415			
MSM76 80-1	RO/CTD/ADCP	17.08.18 06:16	in the water	65° 35.514' N	028° 56.291' W	10736			x-pods attached
MSM76 80-1	RO/CTD/ADCP	17.08.18 06:59	max. depth	65° 34.172' N	028° 54.976' W	11200	1111,6	17,2	
MSM76 80-1	RO/CTD/ADCP	17.08.18 07:26	on deck	65° 34.173' N	028° 54.975' W	11186			salt and oxygen sampled for calibration
MSM76 81-1	RO/CTD/ADCP	17.08.18 07:58	in the water	65° 31.967' N	028° 52.197' W	11735			x-pods attached
MSM76 81-1	RO/CTD/ADCP	17.08.18 08:24	max. depth	65° 31.967' N	028° 52.197' W	11766	1168	14,5	
MSM76 81-1	RO/CTD/ADCP	17.08.18 08:51	on deck	65° 31.967' N	028° 52.197' W	11797			
MSM76 82-1	RO/CTD/ADCP	17.08.18 10:30	in the water	65° 21.026' N	029° 06.414' W	13992			x-pods attached
MSM76 82-1	RO/CTD/ADCP	17.08.18 11:00	max. depth	65° 21.025' N	029° 06.416' W	13976		14,7	max. depth not noted
MSM76 82-1	RO/CTD/ADCP	17.08.18 11:32	on deck	65° 21.024' N	029° 06.415' W	13980			salt and oxygen sampled for calibration
MSM76 83-1	RO/CTD/ADCP	17.08.18 12:11	in the water	65° 24.145' N	029° 12.421' W	13277			x-pods attached
MSM76 83-1	RO/CTD/ADCP	17.08.18 12:38	max. depth	65° 24.146' N	029° 12.420' W	13271	1326,8	14,9	
MSM76 83-1	RO/CTD/ADCP	17.08.18 13:07	on deck	65° 24.144' N	029° 12.416' W	13270			
MSM76 84-1	RO/CTD/ADCP	17.08.18 13:54	in the water	65° 26.070' N	029° 16.298' W	12465			x-pods attached
MSM76 84-1	RO/CTD/ADCP	17.08.18 14:21	max. depth	65° 26.069' N	029° 16.293' W	12447	1229	15,2	
MSM76 84-1	RO/CTD/ADCP	17.08.18 14:49	on deck	65° 26.069' N	029° 16.293' W	12456			salt and oxygen sampled for calibration
MSM76 85-1	RO/CTD/ADCP	17.08.18 15:24	in the water	65° 28.490' N	029° 19.138' W	11225			x-pods attached
MSM76 85-1	RO/CTD/ADCP	17.08.18 15:48	max. depth	65° 28.488' N	029° 19.142' W	11194	1104,8	14,3	
MSM76 85-1	RO/CTD/ADCP	17.08.18 16:14	on deck	65° 28.489' N	029° 19.132' W	11187			
MSM76 86-1	RO/CTD/ADCP	17.08.18 16:46	in the water	65° 29.921' N	029° 23.949' W	9892			x-pods attached
MSM76 86-1	RO/CTD/ADCP	17.08.18 17:07	max. depth	65° 29.922' N	029° 23.952' W	9890	971,2	19,5	
MSM76 86-1	RO/CTD/ADCP	17.08.18 17:30	on deck	65° 29.922' N	029° 23.948' W	9883			salt and oxygen sampled for calibration
MSM76 87-1	RO/CTD/ADCP	17.08.18 17:59	in the water	65° 31.842' N	029° 27.816' W	8594			x-pods attached
MSM76 87-1	RO/CTD/ADCP	17.08.18 18:18	max. depth	65° 31.841' N	029° 27.815' W	8599	839,9	19,5	
MSM76 87-1	RO/CTD/ADCP	17.08.18 18:39	on deck	65° 31.797' N	029° 27.913' W	8614			
MSM76 88-1	RO/CTD/ADCP	17.08.18 19:11	in the water	65° 33.440' N	029° 32.434' W	7048			x-pods attached
MSM76 88-1	RO/CTD/ADCP	17.08.18 19:27	max. depth	65° 33.432' N	029° 32.493' W	7051	688,8	16,5	
MSM76 88-1	RO/CTD/ADCP	17.08.18 19:48	on deck	65° 33.386' N	029° 32.748' W	7016			salt and oxygen sampled for







MSM76 145-1	RO/CTD/ADCP	25.08.18 00:56	max. depth	65° 52.442' N	027° 56.353' W	6247	614	13,4	
MSM76 145-1	RO/CTD/ADCP	25.08.18 01:13	on deck	65° 52.420' N	027° 56.475' W	6268			
MSM76 146-1	RO/CTD/ADCP	25.08.18 01:45	in the water	65° 54.543' N	027° 59.643' W	5752			x-pods attached
MSM76 146-1	RO/CTD/ADCP	25.08.18 02:01	max. depth	65° 54.543' N	027° 59.645' W	5761	561	15,6	
MSM76 146-1	RO/CTD/ADCP	25.08.18 02:18	on deck	65° 54.546' N	027° 59.776' W	5742			salt and oxygen sampled for calibration
MSM76 147-1	RO/CTD/ADCP	25.08.18 02:53	in the water	65° 56.653' N	028° 02.944' W	5232			x-pods attached
MSM76 147-1	RO/CTD/ADCP	25.08.18 03:07	max. depth	65° 56.654' N	028° 02.992' W	5210	511	14	
MSM76 147-1	RO/CTD/ADCP	25.08.18 03:23	on deck	65° 56.655' N	028° 03.045' W	5213			
MSM76 148-1	RO/CTD/ADCP	25.08.18 03:55	in the water	65° 58.754' N	028° 06.235' W	4718			x-pods attached
MSM76 148-1	RO/CTD/ADCP	25.08.18 04:07	max. depth	65° 58.753' N	028° 06.235' W	4719	461,8	13	
MSM76 148-1	RO/CTD/ADCP	25.08.18 04:27	on deck	65° 58.753' N	028° 06.236' W	4727			salt and oxygen sampled for calibration
MSM76 149-1	RO/CTD/ADCP	25.08.18 05:09	in the water	66° 02.738' N	028° 12.189' W	4654			x-pods attached
MSM76 149-1	RO/CTD/ADCP	25.08.18 05:22	max. depth	66° 02.742' N	028° 12.170' W	4643	451,9	13,2	
MSM76 149-1	RO/CTD/ADCP	25.08.18 05:38	on deck	66° 02.742' N	028° 12.172' W	4665			
MSM76 150-1	MOOR	25.08.18 07:20	course 005°	65° 57.019' N	028° 01.992' W	5344			
MSM76 150-1	MOOR	25.08.18 07:46	begin dredging	65° 57.831' N	028° 01.820' W	5261			
MSM76 150-1	MOOR	25.08.18 09:52	all on deck	65° 57.330' N	028° 01.925' W	5320			
MSM76 150-1	MOOR	25.08.18 10:53	course 005°	65° 57.155' N	028° 01.977' W	5362			
MSM76 150-1	MOOR	25.08.18 11:16	begin dredging	65° 57.846' N	028° 01.806' W	5239			
MSM76 150-1	MOOR	25.08.18 13:05	all on deck	65° 57.655' N	028° 01.539' W	5317			dredging of DS 26-17 unsuccessful
MSM76 151-1	MOOR	25.08.18 17:23	released	65° 33.503' N	029° 31.753' W				no depth information
MSM76 151-1	MOOR	25.08.18 17:29	at surface	65° 33.504' N	029° 31.751' W				
MSM76 151-1	MOOR	25.08.18 18:08	recovered	65° 32.236' N	029° 33.142' W				DS-B-18
MSM76 152-1	MOOR	25.08.18 18:31	released	65° 33.531' N	029° 30.621' W				no depth information
MSM76 152-1	MOOR	25.08.18 18:35	at surface	65° 33.530' N	029° 30.640' W				
MSM76 152-1	MOOR	25.08.18 18:47	recovered	65° 33.760' N	029° 30.376' W				DS-F-18
MSM76 153-1	MOOR	25.08.18 19:27	released	65° 31.817' N	029° 18.085' W				no depth information
MSM76 153-1	MOOR	25.08.18 19:33	at surface	65° 31.833' N	029° 18.162' W				
MSM76 153-1	MOOR	25.08.18 20:25	recovered	65° 32.473' N	029° 18.558' W	9704			DS-D-18
MSM76 154-1	RO/CTD/ADCP	25.08.18 22:49	in the water	65° 13.305' N	029° 56.067' W	14547			x-pods attached
MSM76 154-1	RO/CTD/ADCP	25.08.18 23:19	max. depth	65° 13.275' N	029° 56.165' W	14561			Tow-Yo CTD at varying depths, course 244° v=0,5kn
MSM76 154-1	RO/CTD/ADCP	26.08.18 01:16	information	65° 12.838' N	029° 58.241' W	14516			Tow-Yo CTD at varying depths, course 248° v=0,5kn
MSM76 154-1	RO/CTD/ADCP	26.08.18 03:16	information	65° 12.457' N	030° 00.431' W	13477			Tow-Yo CTD at varying depths, course 272° v=0,5kn
MSM76 154-1	RO/CTD/ADCP	26.08.18 05:01	information	65° 12.487' N	030° 02.497' W	14543			Tow-Yo CTD at varying depths, course 270° v=0,5kn
MSM76 154-1	RO/CTD/ADCP	26.08.18 07:09	profile end	65° 12.488' N	030° 05.004' W	14453			
MSM76 154-1	RO/CTD/ADCP	26.08.18 07:40	on deck	65° 12.532' N	030° 05.461' W	14507			
MSM76 155-1	MOOR	26.08.18 10:38	released	65° 28.053' N	029° 34.391' W				no depth information
MSM76 155-1	MOOR	26.08.18 10:42	at surface	65° 28.053' N	029° 34.492' W				
MSM76 155-1	MOOR	26.08.18 11:19	recovered	65° 28.843' N	029° 36.570' W				DS-E-18
MSM76 156-1	MOOR	26.08.18 11:38	released	65° 27.820' N	029° 34.800' W				no depth information
MSM76 156-1	MOOR	26.08.18 11:45	at surface	65° 27.814' N	029° 35.064' W				
MSM76 156-1	MOOR	26.08.18 12:00	recovered	65° 28.367' N	029° 36.023' W				DS-A-18
MSM76 157-1	MOOR	26.08.18 12:57	released	65° 26.963' N	029° 19.810' W				no depth information
MSM76 157-1	MOOR	26.08.18 13:12	at surface	65° 26.974' N	029° 19.842' W				
MSM76 157-1	MOOR	26.08.18 13:50	recovered	65° 27.642' N	029° 21.191' W				DS-C-18
MSM76 158-1	RO/CTD/ADCP	26.08.18 16:07	in the water	65° 11.163' N	029° 59.185' W	15636			x-pods attached
MSM76 158-1	RO/CTD/ADCP	26.08.18 16:38	max. depth	65° 11.169' N	029° 59.192' W	15647			Tow-Yo CTD at varying depths, course 337° v=0,5kn
MSM76 158-1	RO/CTD/ADCP	26.08.18 20:35	information	65° 12.989' N	030° 01.008' W	14217			Tow-Yo CTD at varying depths, course 335° v=0,5kn
MSM76 158-1	RO/CTD/ADCP	26.08.18 22:45	profile end	65° 13.934' N	030° 02.073' W	13820			
MSM76 158-1	RO/CTD/ADCP	26.08.18 23:00	on deck	65° 14.037' N	030° 02.229' W	13737			
MSM76 159-1	RO/CTD/ADCP	26.08.18 23:51	in the water	65° 11.428' N	030° 01.554' W	15285			
MSM76 159-1	RO/CTD/ADCP	27.08.18 00:25	max. depth	65° 11.429' N	030° 01.553' W	15292			Tow-Yo CTD at varying depths, course 337° v=0,5kn
MSM76 159-1	RO/CTD/ADCP	27.08.18 04:15	profile end	65° 13.172' N	030° 03.302' W	14093			
MSM76 159-1	RO/CTD/ADCP	27.08.18 04:40	on deck	65° 13.319' N	030° 03.481' W	13996			
MSM76 160-1	PIES	29.08.18 07:07	released	64° 17.317' N	012° 27.012' W				no depth information
MSM76 160-1	PIES	29.08.18 07:25	at surface	64° 17.314' N	012° 27.012' W				
MSM76 160-1	PIES	29.08.18 07:32	recovered	64° 17.191' N	012° 26.698' W				WICE-P2-16
MSM76 161-1	PIES	29.08.18 09:09	released	64° 26.798' N	012° 03.385' W				no depth information
MSM76 161-1	PIES	29.08.18 09:25	at surface	64° 26.804' N	012° 03.332' W				
MSM76 161-1	PIES	29.08.18 09:32	recovered	64° 27.078' N	012° 03.342' W				WICE-P1-16
MSM76 162-1	RO/CTD/ADCP	30.08.18 16:48	in the water	68° 56.926' N	018° 05.489' W	16158			x-pods attached, temperature loggers were attached for calibration
MSM76 162-1	RO/CTD/ADCP	30.08.18 17:19	max. depth	68° 56.926' N	018° 05.495' W	16209	1603,7	19,3	
MSM76 162-1	RO/CTD/ADCP	30.08.18 18:09	on deck	68° 56.927' N	018° 05.493' W	16166			oxygen sampled for calibration
MSM76 163-1	RO/CTD/ADCP	30.08.18 21:00	in the water	69° 22.972' N	018° 50.986' W	15834			x-pods attached, temperature loggers were attached for calibration
MSM76 163-1	RO/CTD/ADCP	30.08.18 21:31	max. depth	69° 22.972' N	018° 50.982' W	15833	1566	14	
MSM76 163-1	RO/CTD/ADCP	30.08.18 22:26	on deck	69° 22.972' N	018° 50.982' W	15820			salt sampled for calibration
MSM76 164-1	RO/CTD/ADCP	31.08.18 04:54	in the water	70° 33.035' N	020° 10.838' W	2579			
MSM76 164-1	RO/CTD/ADCP	31.08.18 05:05	max. depth	70° 33.034' N	020° 10.835' W	2565	246,6	13,7	
MSM76 164-1	RO/CTD/ADCP	31.08.18 05:16	on deck	70° 33.034' N	020° 10.833' W	2590			salt and oxygen sampled for calibration
MSM76 165-1	RO/CTD/ADCP	31.08.18 11:37	in the water	71° 50.967' N	021° 05.291' W	3911			
MSM76 165-1	RO/CTD/ADCP	31.08.18 11:48	max. depth	71° 50.967' N	021° 05.291' W	3912	381,9	14,6	
MSM76 165-1	RO/CTD/ADCP	31.08.18 12:01	on deck	71° 50.967' N	021° 05.291' W	3922			
MSM76 166-1	RO/CTD/ADCP	31.08.18 14:42	in the water	72° 22.186' N	021° 02.397' W	2088			
MSM76 166-1	RO/CTD/ADCP	31.08.18 14:51	max. depth	72° 22.188' N	021° 02.396' W	2088	195,8	14,7	
MSM76 166-1	RO/CTD/ADCP	31.08.18 15:00	on deck	72° 22.188' N	021° 02.396' W	2100			salt and oxygen sampled for calibration
MSM76 167-1	RO/CTD/ADCP	31.08.18 19:32	in the water	73° 12.583' N	020° 03.042' W	4611			
MSM76 167-1	RO/CTD/ADCP	31.08.18 19:45	max. depth	73° 12.596' N	020° 03.070' W	4588	446,7	13,7	
MSM76 167-1	RO/CTD/ADCP	31.08.18 20:01	on deck	73° 12.593' N	020° 03.053' W	4623			
MSM76 168-1	RO/CTD/ADCP	31.08.18 22:59	in the water	73° 43.867' N	019° 07.747' W	1858			
MSM76 168-1	RO/CTD/ADCP	31.08.18 23:08	max. depth	73° 43.866' N	019° 07.716' W	1862	174,4	14,4	
MSM76 168-1	RO/CTD/ADCP	31.08.18 23:21	on deck	73° 43.865' N	019° 07.715' W	1861			salt and oxygen sampled for calibration
MSM76 169-1	RO/CTD/ADCP	01.09.18 05:44	in the water	74° 22.702' N	016° 13.178' W	2657			
MSM76 169-1	RO/CTD/ADCP	01.09.18 05:56	max. depth	74° 22.701' N	016° 13.178' W	2652	249,1	13,9	
MSM76 169-1	RO/CTD/ADCP	01.09.18 06:07	on deck	74° 22.702' N	016° 13.178' W	2666			
MSM76 170-1	RO/CTD/ADCP	01.09.18 11:08	in the water	75° 13.666' N	015° 52.501' W	1686			
MSM76 170-1	RO/CTD/ADCP	01.09.18 11:12	max. depth	75° 13.665' N	015° 52.493' W	1679	156,7	15	
MSM76 170-1	RO/CTD/ADCP	01.09.18 11:24	on deck	75° 13.667' N	015° 52.495' W	1692			salt and oxygen sampled for calibration
MSM76 171-1	RO/CTD/ADCP	01.09.18 16:09	in the water	76° 00.286' N	014° 19.918' W	3360			
MSM76 171-1	RO/CTD/ADCP	01.09.18 16:22	max. depth	76° 00.287' N	014° 19.908' W	3364	325,2	11,7	
MSM76 171-1	RO/CTD/ADCP	01.09.18 16:35	on deck	76° 00.287' N	014° 19.906' W	3356			
MSM76 172-1	RO/CTD/ADCP	03.09.18 06:27	in the water	79° 43.444' N	017° 45.738' W	1009			
MSM76 172-1	RO/CTD/ADCP	03.09.18 06:33	max. depth	79° 43.444' N	017° 45.739' W	1010	100	14,3	
MSM76 172-1	RO/CTD/ADCP	03.09.18 06:40	on deck	79° 43.444' N	017° 45.739' W	1007			
MSM76 173-1	RO/CTD/ADCP	03.09.18 07:31	in the water	79° 43.205' N	017° 40.538' W	3923			
MSM76 173-1	RO/CTD/ADCP	03.09.18 07:45	max. depth	79° 43.210' N	017° 40.542' W	4007	378	15	
MSM76 173-1	RO/CTD/ADCP	03.09.18 07:59	on deck	79° 43.212' N	017° 40.539' W	4000			salt and oxygen sampled for calibration
MSM76 174-1	RO/CTD/ADCP	03.09.18 08:45	in the water	79° 42.433' N	017° 33.618' W	3419			
MSM76 174-1	RO/CTD/ADCP	03.09.18 08:55	max. depth	79° 42.433' N	017° 33.617' W	3362	326	15	
MSM76 174-1	RO/CTD/ADCP	03.09.18 09:07	on deck	79° 42.433' N	017° 33.616' W	3376			
MSM76 175-1	RO/CTD/ADCP	03.09.18 09:48	in the water	79° 41.496' N	017° 21.338' W	1531			
MSM76 175-1	RO/CTD/ADCP	03.09.18 09:54	max. depth	79° 41.496' N	017° 21.334' W	1530	138	15,3	
MSM76 175-1	RO/CTD/ADCP	03.09.18 10:02	on deck	79° 41.496' N	017° 21.337' W	1531			salt and oxygen sampled for calibration
MSM76 176-1	RO/CTD/ADCP	03.09.18 10:55	in the water	79° 40.585' N	017° 02.905' W	2413			
MSM76 176-1	RO/CTD/ADCP	03.09.18 11:06	max. depth	79° 40.585' N	017° 02.901' W	2411	228	14,6	
MSM76 176-1	RO/CTD/ADCP	03.09.18 11:19	on deck	79° 40.585' N	017° 02.901' W	2411			
MSM76 177-1									

MSM76 177-1	RO/CTD/ADCP	03.09.18 11:57	max. depth	79° 40.375' N	016° 53.789' W	2651	252	16,2	
MSM76 177-1	RO/CTD/ADCP	03.09.18 12:09	on deck	79° 40.375' N	016° 53.791' W	2652			
MSM76 178-1	EM122	03.09.18 13:33	profile start	79° 41.029' N	017° 41.102' W	3999			v=10kn
MSM76 178-1	EM122	03.09.18 17:28	profile end	79° 40.378' N	016° 57.211' W	2658			
MSM76 179-1	MOOR	03.09.18 17:41	start	79° 40.183' N	016° 53.848' W	2633			
MSM76 179-1	MOOR	03.09.18 18:04	deployed	79° 40.159' N	016° 53.876' W	2623			79N6-2
MSM76 180-1	RO/CTD/ADCP	03.09.18 19:19	in the water	79° 38.352' N	016° 38.451' W	2424			
MSM76 180-1	RO/CTD/ADCP	03.09.18 19:31	max. depth	79° 38.351' N	016° 38.451' W	2424	231	13	
MSM76 180-1	RO/CTD/ADCP	03.09.18 19:43	on deck	79° 38.351' N	016° 38.449' W	2418			salt and oxygen sampled for calibration
MSM76 181-1	RO/CTD/ADCP	03.09.18 21:07	in the water	79° 36.735' N	016° 23.900' W	2818			
MSM76 181-1	RO/CTD/ADCP	03.09.18 21:19	max. depth	79° 36.731' N	016° 23.880' W	2816	269,4	15,3	
MSM76 181-1	RO/CTD/ADCP	03.09.18 21:34	on deck	79° 36.734' N	016° 23.904' W	2813			
MSM76 182-1	RO/CTD/ADCP	04.09.18 01:53	in the water	79° 55.681' N	015° 45.833' W	3012			
MSM76 182-1	RO/CTD/ADCP	04.09.18 02:06	max. depth	79° 55.682' N	015° 45.834' W	3011	291	14,4	
MSM76 182-1	RO/CTD/ADCP	04.09.18 02:16	on deck	79° 55.682' N	015° 45.833' W	3011			salt and oxygen sampled for calibration
MSM76 183-1	RO/CTD/ADCP	04.09.18 06:35	in the water	80° 04.697' N	014° 11.998' W	1283			
MSM76 183-1	RO/CTD/ADCP	04.09.18 06:40	max. depth	80° 04.697' N	014° 11.997' W	1285	117,6	14,4	
MSM76 183-1	RO/CTD/ADCP	04.09.18 06:49	on deck	80° 04.697' N	014° 11.998' W	1285			
MSM76 184-1	RO/CTD/ADCP	04.09.18 10:08	in the water	80° 03.314' N	012° 15.881' W	1344			
MSM76 184-1	RO/CTD/ADCP	04.09.18 10:15	max. depth	80° 03.315' N	012° 15.882' W	1345	120,9	14,3	
MSM76 184-1	RO/CTD/ADCP	04.09.18 10:24	on deck	80° 03.314' N	012° 15.882' W	1344			salt and oxygen sampled for calibration
MSM76 185-1	RO/CTD/ADCP	04.09.18 13:23	in the water	79° 54.454' N	010° 32.435' W	1138			
MSM76 185-1	RO/CTD/ADCP	04.09.18 13:29	max. depth	79° 54.454' N	010° 32.434' W	1136	102,6	14,8	
MSM76 185-1	RO/CTD/ADCP	04.09.18 13:38	on deck	79° 54.454' N	010° 32.435' W	1136			
MSM76 186-1	RO/CTD/ADCP	04.09.18 15:36	in the water	79° 46.188' N	008° 51.339' W	1863			
MSM76 186-1	RO/CTD/ADCP	04.09.18 15:44	max. depth	79° 46.188' N	008° 51.334' W	1854	173	14,7	
MSM76 186-1	RO/CTD/ADCP	04.09.18 15:54	on deck	79° 46.188' N	008° 51.334' W	1850			salt and oxygen sampled for calibration
MSM76 187-1	RO/CTD/ADCP	04.09.18 17:32	in the water	79° 36.698' N	007° 22.792' W	2306			
MSM76 187-1	RO/CTD/ADCP	04.09.18 17:41	max. depth	79° 36.707' N	007° 22.777' W	2292	218,8	14,6	
MSM76 187-1	RO/CTD/ADCP	04.09.18 17:51	on deck	79° 36.707' N	007° 22.776' W	2299			
MSM76 188-1	RO/CTD/ADCP	04.09.18 20:02	in the water	79° 21.810' N	006° 15.280' W	2718			
MSM76 188-1	RO/CTD/ADCP	04.09.18 20:12	max. depth	79° 21.810' N	006° 15.280' W	2714	261	14,7	
MSM76 188-1	RO/CTD/ADCP	04.09.18 20:26	on deck	79° 21.810' N	006° 15.281' W	2710			salt and oxygen sampled for calibration
MSM76 189-1	RO/CTD/ADCP	05.09.18 11:43	in the water	77° 37.999' N	005° 48.095' W	3633			
MSM76 189-1	RO/CTD/ADCP	05.09.18 11:57	max. depth	77° 37.995' N	005° 48.090' W	3446	334	13,9	
MSM76 189-1	RO/CTD/ADCP	05.09.18 12:13	on deck	77° 37.995' N	005° 48.091' W	3447			
MSM76 190-1	RO/CTD/ADCP	05.09.18 12:44	in the water	77° 37.735' N	005° 33.235' W	3880			
MSM76 190-1	RO/CTD/ADCP	05.09.18 12:55	max. depth	77° 37.735' N	005° 33.236' W	3906	379,3	12,1	
MSM76 190-1	RO/CTD/ADCP	05.09.18 13:08	on deck	77° 37.735' N	005° 33.239' W	3891			salt and oxygen sampled for calibration
MSM76 191-1	RO/CTD/ADCP	05.09.18 14:06	in the water	77° 37.989' N	005° 24.571' W	4605			
MSM76 191-1	RO/CTD/ADCP	05.09.18 14:18	max. depth	77° 37.990' N	005° 24.568' W	4599	451,8	12,3	
MSM76 191-1	RO/CTD/ADCP	05.09.18 14:33	on deck	77° 37.989' N	005° 24.568' W	4605			
MSM76 192-1	RO/CTD/ADCP	05.09.18 15:14	in the water	77° 37.963' N	005° 13.605' W	7580			temperature loggers were attached for calibration
MSM76 192-1	RO/CTD/ADCP	05.09.18 15:33	max. depth	77° 37.963' N	005° 13.603' W	7570	748,4	13,2	
MSM76 192-1	RO/CTD/ADCP	05.09.18 16:12	on deck	77° 37.963' N	005° 13.608' W	7566			salt and oxygen sampled for calibration
MSM76 193-1	RO/CTD/ADCP	05.09.18 16:45	in the water	77° 37.976' N	004° 56.335' W	11303			temperature loggers were attached for calibration
MSM76 193-1	RO/CTD/ADCP	05.09.18 17:12	max. depth	77° 37.984' N	004° 56.383' W	11284	1118,7	15,4	
MSM76 193-1	RO/CTD/ADCP	05.09.18 17:59	on deck	77° 37.984' N	004° 56.387' W	11304			
MSM76 194-1	RO/CTD/ADCP	05.09.18 18:42	in the water	77° 37.989' N	004° 42.300' W	15058			
MSM76 194-1	RO/CTD/ADCP	05.09.18 19:12	max. depth	77° 37.990' N	004° 42.315' W	15041	1490,2	16,5	
MSM76 194-1	RO/CTD/ADCP	05.09.18 19:45	on deck	77° 37.990' N	004° 42.314' W	15028			salt and oxygen sampled for calibration
MSM76 195-1	RO/CTD/ADCP	05.09.18 20:55	in the water	77° 37.985' N	004° 28.156' W	18967			
MSM76 195-1	RO/CTD/ADCP	05.09.18 21:32	max. depth	77° 37.985' N	004° 28.156' W	18970	1888,8	15	
MSM76 195-1	RO/CTD/ADCP	05.09.18 22:14	on deck	77° 37.986' N	004° 28.155' W	18973			
MSM76 196-1	RO/CTD/ADCP	05.09.18 22:46	in the water	77° 37.986' N	004° 14.167' W	22976			
MSM76 196-1	RO/CTD/ADCP	05.09.18 23:30	max. depth	77° 37.984' N	004° 14.146' W	23003	2288	14,3	
MSM76 196-1	RO/CTD/ADCP	06.09.18 00:20	on deck	77° 37.984' N	004° 14.127' W	22978			salt and oxygen sampled for calibration
MSM76 197-1	RO/CTD/ADCP	06.09.18 00:57	in the water	77° 37.987' N	003° 59.661' W	25947			
MSM76 197-1	RO/CTD/ADCP	06.09.18 01:49	max. depth	77° 37.992' N	003° 59.958' W	25890	2579	14,7	
MSM76 197-1	RO/CTD/ADCP	06.09.18 02:40	on deck	77° 37.992' N	003° 59.960' W	25871			
MSM76 198-1	MOOR	06.09.18 14:10	released	78° 59.473' N	005° 39.962' E				no depth information
MSM76 198-1	MOOR	06.09.18 14:13	at surface	78° 59.475' N	005° 39.960' E				
MSM76 198-1	MOOR	06.09.18 15:52	recovered	79° 01.261' N	005° 40.395' E	19315			F5-17
MSM76 199-1	RO/CTD/ADCP	06.09.18 17:39	in the water	79° 00.001' N	004° 00.067' E	27092			done with the CTD of the ship
MSM76 199-1	RO/CTD/ADCP	06.09.18 18:30	max. depth	78° 59.999' N	003° 59.934' E	27105			
MSM76 199-1	RO/CTD/ADCP	06.09.18 19:19	on deck	78° 59.998' N	003° 59.935' E	27073			
MSM76 200-1	RO/CTD/ADCP	06.09.18 19:49	in the water	78° 59.999' N	003° 59.936' E	27099			
MSM76 200-1	RO/CTD/ADCP	06.09.18 20:39	max. depth	78° 59.999' N	003° 59.937' E	27099	2695,2	15,1	
MSM76 200-1	RO/CTD/ADCP	06.09.18 21:33	on deck	79° 00.012' N	003° 59.985' E	27096			salt and oxygen sampled for calibration
MSM76 201-1	RO/CTD/ADCP	06.09.18 22:25	in the water	79° 00.012' N	004° 29.846' E	24908			
MSM76 201-1	RO/CTD/ADCP	06.09.18 23:10	max. depth	79° 00.013' N	004° 29.871' E	24934	2479	12,9	
MSM76 201-1	RO/CTD/ADCP	07.09.18 00:01	on deck	79° 00.012' N	004° 29.860' E	24960			
MSM76 202-1	MOOR	07.09.18 04:54	released	79° 00.517' N	008° 00.674' E				no depth information
MSM76 202-1	MOOR	07.09.18 04:57	at surface	79° 00.531' N	008° 00.549' E				
MSM76 202-1	MOOR	07.09.18 06:17	recovered	78° 59.815' N	007° 59.044' E	10733			F3-17
MSM76 203-1	MOOR	07.09.18 06:58	released	79° 00.402' N	008° 20.568' E				no depth information
MSM76 203-1	MOOR	07.09.18 07:01	at surface	79° 00.395' N	008° 20.637' E				
MSM76 203-1	MOOR	07.09.18 07:53	recovered	78° 59.954' N	008° 18.907' E	8004			F2-18
MSM76 204-1	MOOR	07.09.18 08:54	released	79° 00.086' N	008° 33.062' E				no depth information
MSM76 204-1	MOOR	07.09.18 09:15	searching for F1-16	79° 00.036' N	008° 32.867' E				ship moved 4 miles north with hydrophone in water
MSM76 204-1	MOOR	07.09.18 10:12	searching for F1-16	79° 03.727' N	008° 35.815' E				ship moved 8 miles south with hydrophone in water
MSM76 204-1	MOOR	07.09.18 11:25	searching for F1-16	78° 56.010' N	008° 34.298' E				ship moved 4 miles north with hydrophone in water
MSM76 204-1	MOOR	07.09.18 12:28	Hydrophon on deck	79° 00.026' N	008° 32.624' E				recovery of F1-16 unsuccessful
MSM76 205-1	MOOR	07.09.18 12:58	deployed	79° 00.000' N	008° 32.554' E				F1-17, no depth information
MSM76 206-1	MOOR	07.09.18 13:48	start	78° 59.997' N	008° 19.725' E	7830			
MSM76 206-1	MOOR	07.09.18 14:50	deployed	78° 59.994' N	008° 19.728' E	7830			F2-19
MSM76 207-1	RO/CTD/ADCP	07.09.18 18:25	in the water	79° 00.008' N	004° 52.424' E	24230			
MSM76 207-1	RO/CTD/ADCP	07.09.18 19:11	max. depth	79° 00.008' N	004° 52.419' E	24217	2405,2	15	
MSM76 207-1	RO/CTD/ADCP	07.09.18 20:00	on deck	79° 00.008' N	004° 52.420' E	24215			
MSM76 208-1	RO/CTD/ADCP	07.09.18 20:49	in the water	79° 00.006' N	005° 18.616' E	22789			
MSM76 208-1	RO/CTD/ADCP	07.09.18 21:32	max. depth	79° 00.107' N	005° 18.349' E	22694	2252	14,5	
MSM76 208-1	RO/CTD/ADCP	07.09.18 22:20	on deck	79° 00.248' N	005° 17.958' E	22535			salt and oxygen sampled for calibration
MSM76 209-1	RO/CTD/ADCP	07.09.18 23:05	in the water	79° 00.044' N	005° 44.563' E	20339			
MSM76 209-1	RO/CTD/ADCP	07.09.18 23:46	max. depth	79° 00.049' N	005° 44.581' E	20417	2024,2	13,2	
MSM76 209-1	RO/CTD/ADCP	08.09.18 00:27	on deck	79° 00.049' N	005° 44.582' E	20387			
MSM76 210-1	RO/CTD/ADCP	08.09.18 01:14	in the water	79° 00.012' N	006° 10.943' E	16810			
MSM76 210-1	RO/CTD/ADCP	08.09.18 01:49	max. depth	79° 00.012' N	006° 10.941' E	16780	1662	12,5	
MSM76 210-1	RO/CTD/ADCP	08.09.18 02:25	on deck	79° 00.012' N	006° 10.941' E	16811			salt and oxygen sampled for calibration
MSM76 211-1	RO/CTD/ADCP	08.09.18 03:19	in the water	79° 00.011' N	006° 37.154' E	13225			
MSM76 211-1	RO/CTD/ADCP	08.09.18 03:45	max. depth	79° 00.011' N	006° 37.153' E	13231	1310,2	13,8	
MSM76 211-1	RO/CTD/ADCP	08.09.18 04:16	on deck	79° 00.011' N	006° 37.154' E	13266			
MSM76 212-1	RO/CTD/ADCP	08.09.18 04:42	in the water	79° 00.011' N	006° 50.239' E	12379			
MSM76 212-1	RO/CTD/ADCP	08.09.18 05:09	max. depth	79° 00.011' N	006° 50.237' E	12314	1217	14,8	
MSM76 212-1	RO/CTD/ADCP	08.09.18 05:40	on deck	79° 00.011' N	006° 50.232' E	12288			salt and oxygen sampled for calibration
MSM76 213-1	MOOR	08.09.18 07:							

