

Cruise MSM88/2

Bathymetric mapping of the seafloor - a German contribution to completing the map by 2030

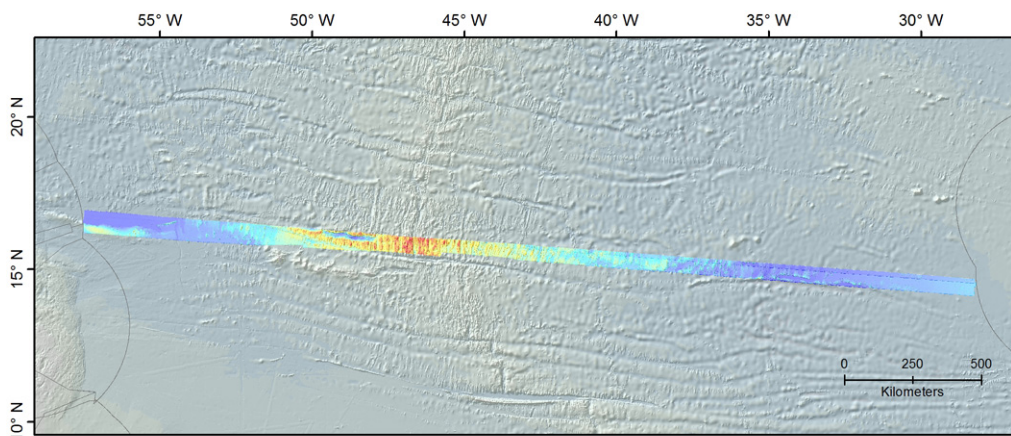
19.12.2019 - 14.01.2020

From Mindelo (Cabo Verde) - to Bridgetown (Barbados)



4. Weekly Report, 06.01.2020 –13.01.2020

With a speed of 12 knots we are approaching Barbados and thus the end of our trip. Monday morning we will reach the Barbados Exclusive Economic Zone (EEZ), turn off the echosounder and process the last of the data. A day later (Jan. 14th) 8:00 a.m. local time, we will enter the port of Bridgetown. Until the EEZ, we continue to record sonar data in parallel to our last profile. However, due to time constraints, we are now driving at 12 knots and therefore switched off the magnetometer last night and brought it on board. Similar to a magnetometer on the previous lag, this magnetometer also shows bite marks from sharks.



Mapped area of the cruises MSM88/1 and MSM88/2

In the past four weeks on board, we have mapped more than 145,000 km² seabed to date, more than we hoped and expected. We measured water depths between 1500m and 6000m and passed the mid-Atlantic ridge 5 times. All data has been processed and is to be made publicly available in international databases such as PANGAEA or IHO DCDB according to the FAIR data principles: Findability, Accessibility, Interoperability and Reusability. They will also find their way into GEBCO (General Bathymetric Chart of the Oceans).

There is always a successful team behind successful trips. Therefore, I would like to thank my scientific working group, as well as the crew of Maria S. Merian, for their dedication, support and for the relaxed and pleasant atmosphere on board.

Anne-Cathrin Wölfl, Chief Scientist, MSM88/2
GEOMAR Helmholtz Centre for Ocean Research Kiel