

MSM88-1 "German Mapping"

26.11.19 - 01.12.19



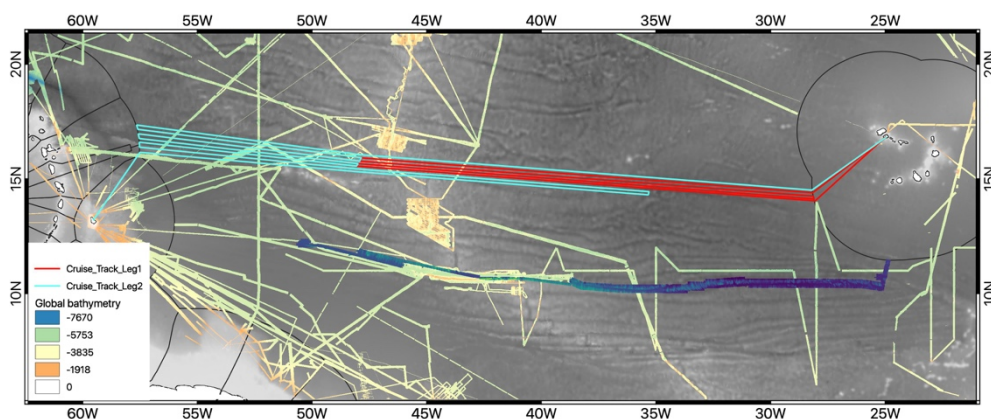
The week began with Maria S Merian moored in Mindelo harbour. The Cape Verdes were celebrating "Ocean Week", involving the whole populace in appreciating and



protecting the ocean. At the same time, the German science ministry and the West African Science Service Centre on Climate Change and Adapted Land Use (WASCAL) were celebrating the Kick-Off of a new "Climate Change and Marine Science" Masters program to be run by the University in Mindelo. Many representatives of WASCAL and its associated governments were in town and so it was a good opportunity for them to visit the ship for a reception. More than 70 invited guests took the opportunity to visit the

ship and get to know about the scientific work it supports.

On the morning of 28.11.19 we left port and steamed to the south-west margin of the Cape Verde EEZ. We arrived there early in the morning of 29.11.19 and began our work. The aim of the MSM88 cruise is to make a German contribution to mapping the seafloor - the international scientific community has committed to mapping the whole ocean floor by 2030. As only around 15% of this task has been completed (all the grey areas on the map, below, are unmapped, leaving around 300 million km² still to go - roughly 30 times the area of the continental USA!) every contribution helps. During MSM88 Leg 1 (red survey lines) we hope to map around 90.000 km² for the first time, bringing us 0.02% closer to the goal! We



are also towing a magnetometer from University of Hamburg behind the ship to measure the magnetic signature of the ocean crust along our long transects.

At the end of the first short week at sea all are well, enjoying their watches in the sonar lab and celebrating the 1st Sunday of Advent far from home.

Colin Devey, Chief Scientist MSM88-1

GEOMAR - Helmholtz Centre for Ocean Research Kiel