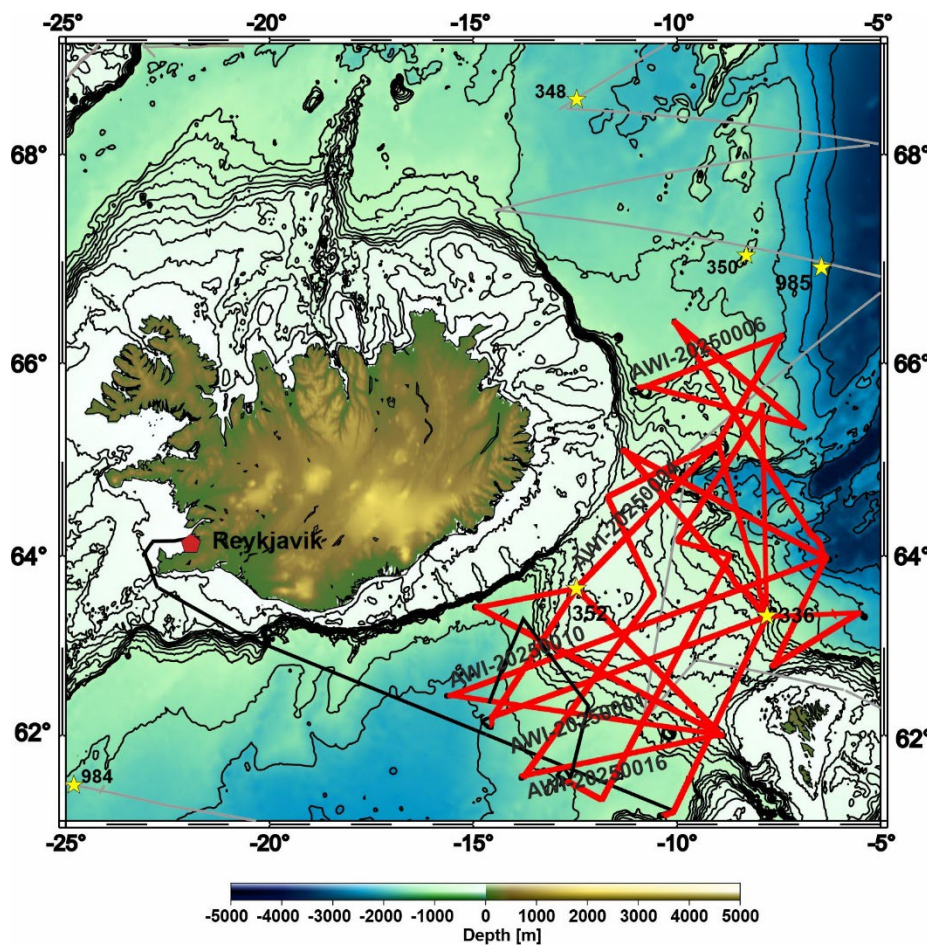


**Expedition MSM 138  
Reykjavik - Reykjavik**

**Weekly report No 5  
July 14– July 22 2025**



Our cruise will be over soon. Streamer and seismic sources have been retrieved on July 18 and have been maintained and cleaned. Again, we see open boxes everywhere but now we have starting filling them with equipment, computers, screens and tons of cables.



We have used the almost five weeks efficiently and collected seismic data along profiles of about 6550 km length. The bathymetric and Parasound profiles are even a bit longer. This will provide an excellent base to answer the raised questions regarding the development of the Iceland-Faroe Ridge Overflow.

This successful cruise was only made possible by the extraordinary support of Captain Bergmann and his crew. On deck we got excellent help during

deployment, securing and retrieval of our equipment, the engineers made sure that the vessel moved, we had water and electricity, and the boys on the bridge always kept us on track. On top

of this the kitchen and service spoiled us with excellent food and made our life on board extremely comfortable. We want to thank them all.

Last but not least, both scientific teams carried out the operations very well and maintained the equipment here on board successfully. Thanks to them as well. Last but not least, both scientific teams prepared the cruise extremely well and operated and maintained the equipment here on board successfully. Thanks to them as well. Additionally, I want to thank our colleague T. Eggers. Without his extremely valuable help during the cruise preparation the expedition would not have been possible.

We send home cheerful greetings.

North Atlantic, July 20 2025, 62° 50.029 N /13° 12.468' W

Gabriele Uenzelmann-Neben

Alfred-Wegener-Institut, Helmholtz-Zentrum für Polar- und Meeresforschung (AWI)

<https://www.awi.de/en/science/geosciences/geophysics/expeditions.html>