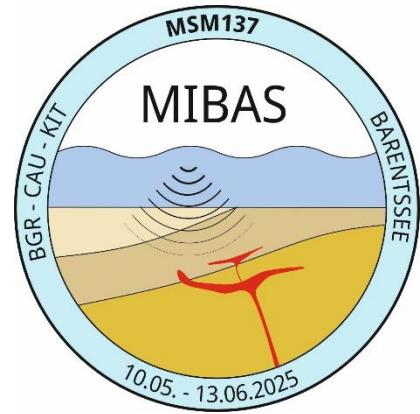


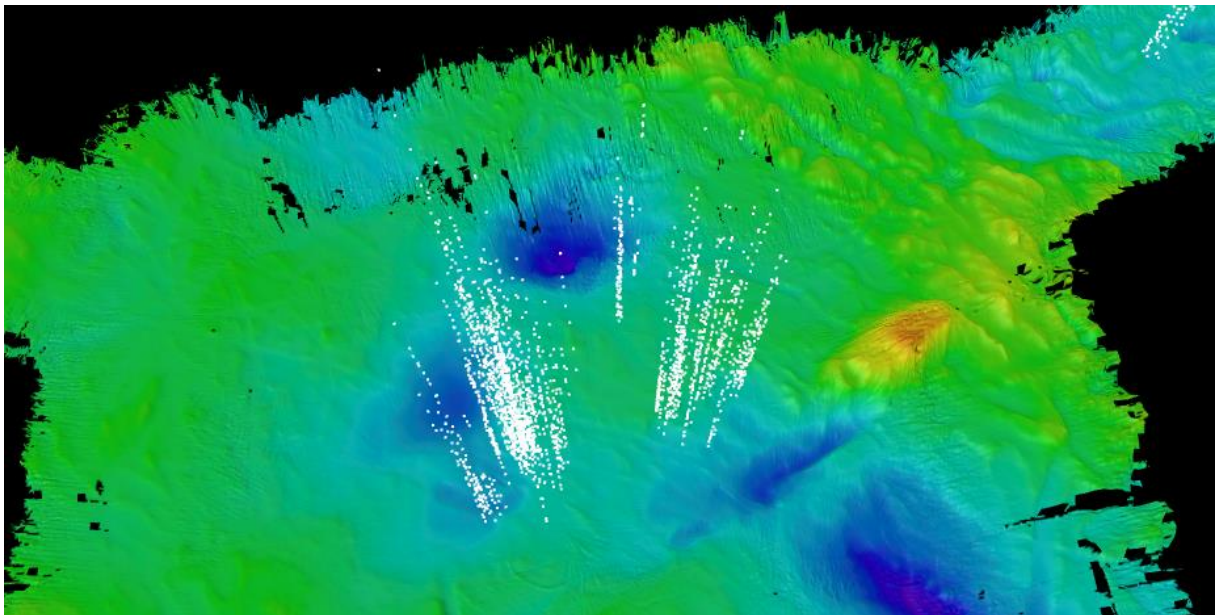
## 5. Weekly Report

MSM137

June 02 – June 08, 2025



On the morning of June 2, we completed the recovery of the 12 ocean bottom seismometers in the second area of the cruise, which is located at the Gardarbanken High. The following hours were used for a detailed hydroacoustic investigation of the water column - during the seismic profiling of the previous days, we had found some indications of gas flares in the multibeam echo sounder data. We were able to confirm the existence of these flares by repeated traverses.



*Bathymetric map showing gas flares (in white).*

On June 3, we reached the third working area of the cruise. This is located slightly north of 76°N on the Edgeøya platform, approx. 40 nautical miles west of the island of Hopen. In the afternoon, we successfully deployed the 6600 m long seismic cable. During this time, however, the weather conditions deteriorated and the wave heights increased, so we had to wait some time before deploying the seismic airguns. At 11:30 a.m. on June 4, we were ready for acquisition and began the seismic survey of the area. By June 6 in the morning, we had recorded a total of 7 profiles with a total length of almost 250 km. At 11:30 a.m., all the seismic gear was safely

back on board and we used the last few hours in the working area to consolidate our bathymetric data set. The Maria S. Merian began its return transit to Reykjavik at 10 p.m. on June 7.

We have a successful cruise behind us, during which we surveyed a total of almost 2000 profile kilometres with geophysical methods over 23 working days. This data set will enable us to achieve the goals of the MIBAS project. We would like to thank Captain Maaß and the entire crew for the professional and smooth execution of the cruise.

All participants are doing well and are looking forward to returning home soon.

Michael Schnabel

Chief Scientist MSM137



*The last day of the cruise showed some snow on the vessel.*